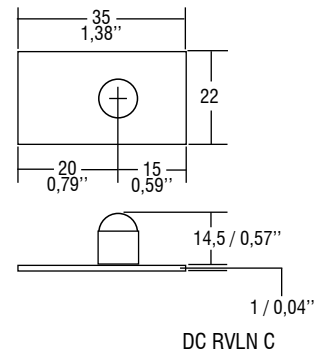
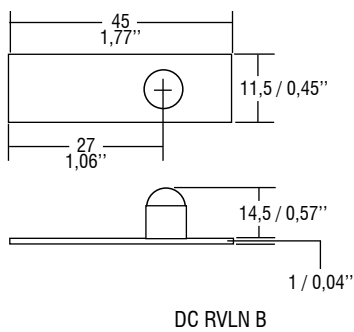
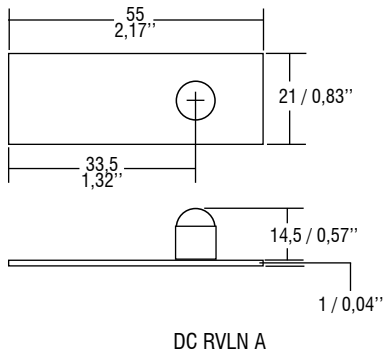


Low voltage mini-body detector
Mini rivelatore di presenza in bassa tensione

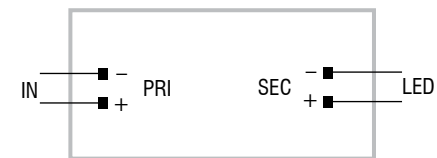
Made in Europe


BUILT-IN Weight - Peso gr. 5 / 0,17 oz.
 Pcs - Pezzi 1

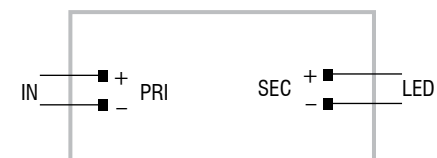
BUILT-IN Weight - Peso gr. 3 / 0,10 oz.
 Pcs - Pezzi 1

BUILT-IN Weight - Peso gr. 4 / 0,14 oz.
 Pcs - Pezzi 1

Wiring diagrams - Schemi di collegamento


DC RVLN A diagram - Collegamento DC RVLN A

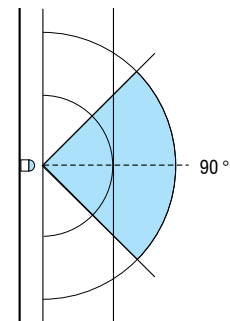


DC RVLN B diagram - Collegamento DC RVLN B

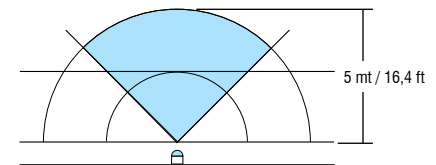


DC RVLN C diagram - Collegamento DC RVLN C

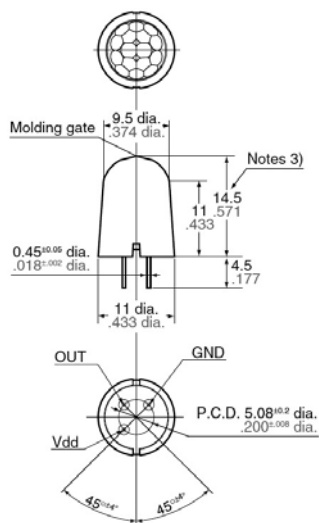
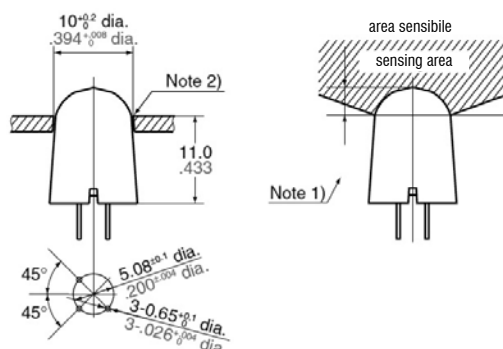
Figure - Figura 1



Vertical sensibility - Sensibilità verticale



Horizontal sensibility - Sensibilità orizzontale


Recommended panel mounting hole - Raccomandazioni per il foro di montaggio


- Note 1) In order to ensure proper detection, install it with the lens exposed at least 3,5 mm / 0,13".
 Per garantire una corretto funzionamento, installarlo con la lente che sporge dalla superficie di almeno di 3,5 mm / 0,13".
- Note 2) As for panel mounting hole, tapering or making a large size hole should be done.
 Circa il pannello dove fare il foro di montaggio, fare un foro di grandi dimensioni in modo da fissare la lente.
- Note 3) The height dimension does not include the remaining molding gate.
 La dimensione in altezza non comprende la scheda elettronica.