

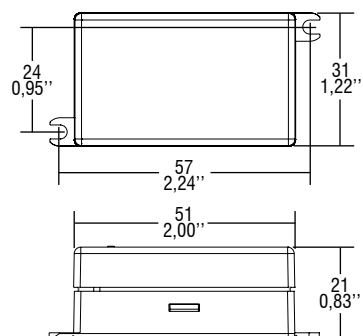
## Direct current electronic drivers Alimentatori elettronici in corrente continua

Made in Europe



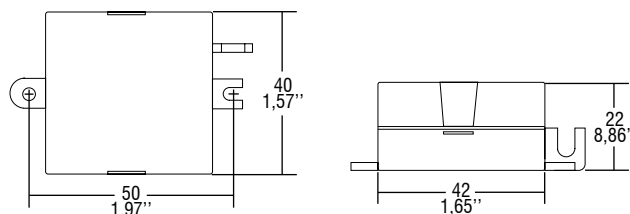
**BUILT-IN** **SCREW FIXING** Weight - Peso: gr. 35 / 1,23 oz.  
Pcs - Pezzi 50

250mA - 500mA

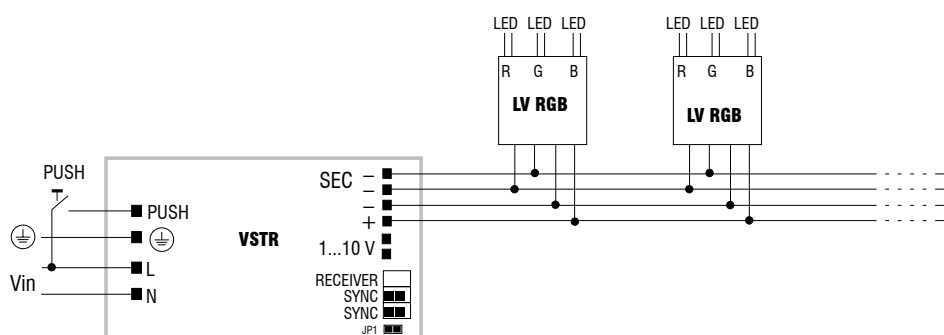


**BUILT-IN** **SCREW FIXING** Weight - Peso: gr. 35 / 1,23 oz.  
Pcs - Pezzi 10

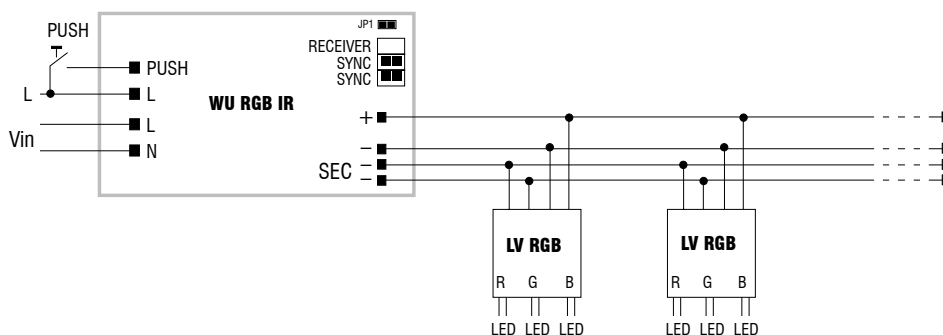
350mA



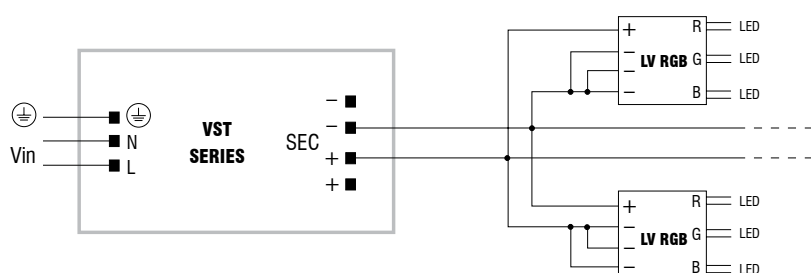
### Examples of applications - Esempi di applicazioni



LV RGB with VSTR diagram - Collegamento LV RGB con VSTR



LV RGB with WU RGB diagram - Collegamento LV RGB con WU RGB



LV RGB with VST Series diagram - Collegamento LV RGB con Serie VST

7.

Low voltage LED drivers  
Alimentatori LED in corrente continua a bassa tensione