

LEDiL[®]



RANGE & PRECISION – LEDiL[®]'s standard LED optics offer both

LEDiL is a Finnish manufacturer and supplier of top quality LED secondary optics. We are driven by an innovative 'can do, will do' attitude and willing to run that 'extra mile' to bring our customers the finest solutions that add real value to their end products. Whether you need reflectors or lenses, asymmetric or symmetric. Our standard product range brings over 3.500 cost-effective optical solutions to our customers' needs. With a global network of distributors and free of charge technical support to all customers we guarantee you the most competitive solutions available today.

Application support

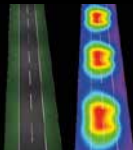
Custom solutions

Symmetric

Asymmetric

Reflectors

Arrays





Dear Customer

Please note that you can find product ordering codes with the latest product information and LED compatibility at our website: www.ledil.com/product_search

FWHM, efficiency and other values in this catalogue are typical values and subject to chosen LED/

optic -combination. Actual values for a certain LEDs can be found on our website.

For your convenience we have included saved search paths under each product family name. This address will take you directly to the family listing on our website.

For assembly instructions and useful information about LEDiL products, please see our Installation Guide at www.ledil.com/installation_guide

Subscribe to our newsletter and get the latest product information at www.ledil.com/subscribe



Scan to subscribe
LEDiL Newsletter!



www.ledil.com/subscribe

LEDiL Oy
Salorankatu 10, FI-24240 SALO, Finland

Local sales and technical support

See page 45 or visit www.ledil.com/where_to_buy

Shipping locations

Salo, Finland
Hong Kong, China

Franchised Distribution Partners

See www.ledil.com/where_to_buy

Contents

Single lenses	4	Multi-lens arrays	14	Reflectors	28
LARISA	4	GT3	14	LENA	28
LISA	4	GT4	14	LENINA	28
LISA2	4	ANGIE	14		
TWIDDLE	4	ANNA	15	Specialty products	29
TINA	5	TAMPA	15	RGB-MIXING	29
TINA2	5	PENTA	15	BLONDIE	30
TINA3	5	QUAK	16	HELENA	30
FLORENTINA	5	MELODY	16	DOROTHY	30
FLORENTINA-2X2	6	DOLLY	16	EMERALD	30
FLORENTINA-4X1	6	TUIJA	16	RONDA	31
ROSE	7	MARTHA	16	CARMEN	31
ROSE-MRK	7	EMY	16	OLIVIA	31
ROSE-UV	7	SANDRA	17	FRIDA-A	32
LAURA GenII	8	VIRPI	17	VENLA-IRIS	32
LAURA	8	PETUNIA	17	SOPHIE	32
LEILA GenII	8	VANESSA	17	LOTTA-A	32
LEILA	8	LUCIA	18	OONA-A	32
SIRI-A	9	IDA	18	EMMA	32
IRENE	9	SHELLY	19	STRADA-S	32
IRIS	9	ZENIA	19	JENNY	33
MIRA	9	FLORENCE-1R-GC	19	ZORYA	33
EVA	10	FLORENCE-3R-IP	19	SAGA	34
EYA	10	FLORENCE-1R	20	STELLA	34
IRINA	10	FLORENCE-3R	21		
EMILY	10			High Bay	35
HEIDI	10	Reflectors	22	Street lighting	36
TITANUM / SPUTNIK	11	MINNIE	22	TATIANA	36
AMELIA	11	BOOM	22	STRADELLA	37
KIKI	11	BRITNEY	22	STRADA	38
JULIA-A	11	BOOMERANG	22	Single optics	38
BILLIE	12	BRIDGET / LILY / CINDY	22	2x2 modules	40
FLARE	12	BROOKE-G2	23	STRADA-2X2S	42
VERONICA	12	BROOKE	23	Silicone 2X2MXS	42
WINNIE	13	VENLA	23	2x2MX modules	43
CRYSTAL	13	RITA	23	STRADA-IP-2X6 modules	44
SEANNA-A	13	PF-system reflectors	24	STRADA 6X1 modules	44
		BARBARA	24		
Multi-lens arrays	14	MIRELLA	25		
SATU	14	ANGELETTE	26	Where to buy	45
CUTE	14	ANGELA / ANGELINA	27		

LARISA

www.ledil.com/larisa

Name	Beam type	H	D	Typ. FWHM	Typ. Eff.	Typ. cd/lm
LARISA-M	Medium	7.5	9.9 x 9.9	32	86	2,2
LARISA-O	Oval	7.5	9.9 x 9.9	40 x 22	81	2,1
LARISA-RS	Real spot	7.5	9.9 x 9.9	19	80	3,7
LARISA-W	Wide	7.5	9.9 x 9.9	48	85	1,2
LARISA-WW	Extra wide	7.5	9.9 x 9.9	57	84	0,9
LARISA-RZ	Diffused spot	7.5	9.9 x 9.9	27	77	1,9
CP15304_LARISA-RS-PIN	Real spot	7.5	9.9 x 9.9	32	86	2,2
CP15305_LARISA-M-PIN	Medium	7.5	9.9 x 9.9	40 x 22	81	2,1
CP15306_LARISA-O-PIN	Oval	7.5	9.9 x 9.9	19	80	3,7
CP15307_LARISA-W-PIN	Wide	7.5	9.9 x 9.9	48	85	1,2
CP15308_LARISA-WW-PIN	Extra wide	7.5	9.9 x 9.9	57	84	0,9
CP15309_LARISA-RZ-PIN	Diffused spot	7.5	9.9 x 9.9	27	77	1,9



LARISA

LISA

www.ledil.com/lisa

Name	Beam type	H	D	Typ. FWHM	Typ. Eff.	Typ. cd/lm
LISA-SS	Smooth spot	7.1	10.8	22	86	3.8
LISA-RS	Real spot	7.1	10.8	15	90	3.9



LISA-SS

PMMA / White PC
H: ≈7,3 mm, D: 10,8 mm
Beam type: Smooth spot

LISA2

www.ledil.com/lisa2

Name	Beam type	H	D	Typ. FWHM	Typ. Eff.	Typ. cd/lm
LISA2-M	M	≈ 6,8	9,9	22	89	2,8
LISA2-O	O	≈ 7	≈ 10	45 x 21	82	2,2
LISA2-O-90	O-90	≈ 6,8	9,9	19 x 48	82	2,2
LISA2-O-90-PIN	O-90	≈ 6,8	9,9	48+18	83	2,2
LISA2-RS	RS	≈ 6,8	9,9	19	89	3,1
LISA2-W	W	≈ 6,8	≈ 9,9	34	88	1,8
LISA2-WW	WW	≈ 6,8	≈ 9,9	46	89	1,1
LISA2-WWW	WWW	≈ 6,8	≈ 9,9	80	83	0,4



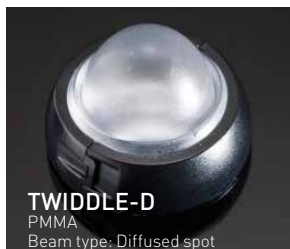
LISA2-R-PIN

Hyper Reflective white PC
H: ≈6,6 mm
D: 9,9 mm
Beam type: Extra² wide

TWIDDLE

www.ledil.com/twiddle

Name	H	D	Typ. FWHM	Typ. Eff.	Typ. cd/lm
TWIDDLE-D	14.3	21.6	20	81	TBA
TWIDDLE-M	13.2	21.6	32	72	TBA
TWIDDLE-RZ-D	14.57	21.56	18	60	4,1
TWIDDLE-RZ-M	13.34	21.56	20	68	4,1



TWIDDLE-D

PMMA
Beam type: Diffused spot

Single lenses

TINA

www.ledil.com/tina

Name	Beam type	H	D	Typ. FWHM	Typ. Eff.	Typ. cd/lm
TINA-D	Diffused spot	≈ 10	16,1	16	92	6,1
TINA-M	Medium	≈ 10	16,1	29	88	2,1
TINA-O	Oval	≈ 10	16,1	34 x 15	89	3,4
TINA-RS	Real spot	≈ 10	16,1	13	93	10,9
TINA-W	Wide	≈ 10	16,1	48	91	1,3
TINA-WW	Extra wide	≈ 10	16,1	61	91	0,8



TINA-WW
PMMA / White PC
Beam type: Extra wide

TINA2

www.ledil.com/tina2

Name	Beam type	H	D	Typ. FWHM	Typ. Eff.	Typ. cd/lm
TINA2-D	Diffused spot	≈ 10	16,1	16	89	6,9
TINA2-M	Medium	≈ 10	16,1	29	86	2,5
TINA2-O	Oval	≈ 10	16,1	35 x 16	87	3,5
TINA2-O-WAS	Asymm. oval	≈ 10	16,1	TBA	TBA	TBA
TINA2-RS	Real spot	≈ 10	16,1	14	91	10,4
TINA2-W	Wide	≈ 10	16,1	46	87	1,37
TINA2-WW	Extra wide	≈ 10	16,1	58	87	0,9
TINA2-R	Wide	10,1	16,1	74	90	0,5

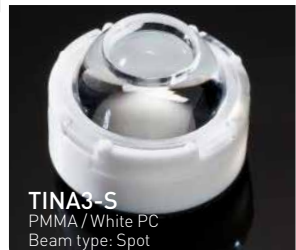


TINA2-R-CLIP16
Hyper Reflective white PC
H: 10,1 mm
D: 16,1 mm
Beam type: Wide

TINA3

www.ledil.com/tina3

Name	Beam type	H	D	Typ. FWHM	Typ. Eff.	Typ. cd/lm
TINA3-00	00	≈ 7	≈ 16,1	59 x 39	90	1,20
TINA3-S	S	11,4	16,1	13	77	8,40
TINA3-W	W	≈ 7	16,1	39	90	1,70
TINA3-WW	WW	≈ 7	16,1	53	90	1,00
TINA3-WWW	WWW	≈ 7	16,1	71	88	0,60



TINA3-S
PMMA / White PC
Beam type: Spot

FLORENTINA

www.ledil.com/florentina

Linear multiholder with glare protection for 12 pieces of TINA/TINA2 lenses

Code	Beam type	H	D	Typ. FWHM	Typ. Eff.	Typ. cd/lm
FLORENTINA-RS	Real spot	25.1	29x 287	11	84	16.74
FLORENTINA-SS	Smooth spot	25.1	29x 287	21	85	5.88
FLORENTINA-M	Medium	25.1	29x 287	29	81	3.28
FLORENTINA-O	Oval	25.1	29x 287	35+12	83	5.05
FLORENTINA-D	Diffused spot	25.1	29x 287	13	84	9.62
FLORENTINA-W	Wide	25.1	29x 287	42	84	1.75



FLORENTINA

The information contained herein is the property of LEDIL Oy, Satorankatu 10, FI-24240 SALO, Finland, and is subject to change without prior notice. Please visit www.ledil.com for additional information, such as the latest photometric files, 3D mechanical models, and application notes relating to handling, gluing and taping.

FLORENTINA-2X2

www.ledil.com/florentina-2x2

Holder solution built around LEDiL's proven ROSE- and LAURA-lens families. Similarly to other Dark Light products, it reduces the unwanted glare very efficiently, while maintaining the optical performance required by the application. Ingenious design allows easy integration into customers' mechanics and many different types of fastening ranging from snapping springs to screws, with even possibility to tilt the whole package afterwards.

Code	Beam type	H	D	Typ. FWHM	Typ. eff.	Typ. cd/lm
FLORENTINA-2X2-SS	Smooth spot	17.7	95.6 x 95.6	20	79	5.4
FLORENTINA-2X2-RS	Real spot	17.7	95.6 x 95.6	16	78	7.4
FLORENTINA-2X2-D	Diffused spot	17.7	95.6 x 95.6	19	77	5.5
FLORENTINA-2X2-M	Medium	17.7	95.6 x 95.6	30	75	2.4
FLORENTINA-2X2-O	Oval	17.7	95.6 x 95.6	44+18	70	2.5
FLORENTINA-2X2-W	Wide	17.7	95.6 x 95.6	49	70	1.0
FLORENTINA-0-T45	Wall washer	17.7	95.6 x 95.6	TBA	76	TBA



FLORENTINA-2X2

FLORENTINA-4X1

NEW!

www.ledil.com/florentina-4x1

LEDiL has widened the FLORENTINA holder portfolio with the new FLOERNTINA-4X1 model. Sharing the same glare minimizing design elements and numerous different fastening options - as the previously released 2X2-version - it works as a perfect platform for stylish indoor lighting. FLORENTINA-4X1 can be equipped with any ROSE- or LAURA lenses to provide a wide base of optical solutions available. Even the UV-suitable lenses can be used with the metallized FLORENTINA-4X1-UV shade for corresponding applications. For comfortable indoor lighting with a hint of stylish Scandinavian outlook - FLORENTINA-4X1.



Code	Beam type	Height	Dimensions	Typ. eff.	Typ. FWHM
FLORENTINA-4X1-SS	Smooth spot	17,72	175,6 x 55,6	TBA	TBA
FLORENTINA-4X1-RS	Real spot	17,72	175,6 x 55,6	TBA	TBA
FLORENTINA-4X1-D	Diffused spot	17,72	175,6 x 55,6	TBA	TBA
FLORENTINA-4X1-M	Medium	17,72	175,6 x 55,6	TBA	TBA
FLORENTINA-4X1-O	Oval	17,72	175,6 x 55,6	TBA	TBA
FLORENTINA-4X1-W	Wide	17,72	175,6 x 55,6	TBA	TBA
FLORENTINA-4X1-SHD	Black shade	17,7	175,6 x 55,6		
FLORENTINA-4X1-SHD-UV	Metallized UV-shade	17,7	175,6 x 55,6		

FWHM angles, efficiencies and cd/lm values contained herein are typical values. Actual measured values depend of the specific LED/optic combination. Go to www.ledil.com for LED specific values and optical datasheets.

Single lenses

ROSE

www.ledil.com/rose

Name	Beam type	D	Typ. FWHM	Typ. Eff.	Typ. cd/lm
ROSE-D	D	21.6x21.6	16	85	7,1
ROSE-M	M	21.6x21.6	30	83	2,5
ROSE-MD	MD	21.6x21.6	24	TBA	TBA
ROSE-O	O	21.6x21.6	43 x 15	81	3,1
ROSE-O-90	O-90	21.6x21.6	13 x 44	81	3,6
ROSE-RS	RS	21.6x21.6	11	88	21,7
ROSE-SS	SS	21.6x21.6	15	87	9,37
ROSE-W	W	21.6x21.6	51	81	1,1
ROSE-WW	WW	21.6x21.6	59	81	0,78
ROSE-WWW	WWW	21.6x21.6	80	84	0,4



ROSE-MRK

www.ledil.com/rose-mrk

LEDiL's ROSE product family has been upgraded with the new MRK series suitable for bigger 7070 size LED packages. Having the same outer dimensions as the previously released ROSE-products they are compatible with numerous different lighting fixtures straight away. The lenses come preassembled in lightweight and durable holders with a long lasting fastening tape that makes their installation fast and easy.

Name	Beam type	D	Typ. FWHM	Typ. Eff.	Typ. cd/lm
ROSE-MRK-S	Spot	21.6x21.6	30	80	TBA
ROSE-MRK-M	Medium	21.6x21.6	43	84	TBA
ROSE-MRK-W	Wide	21.6x21.6	62	84	TBA

NEW!

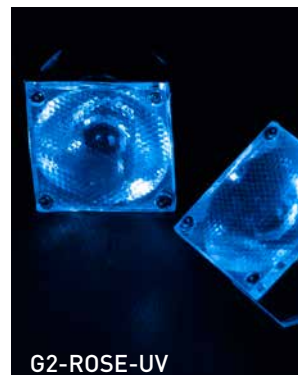


ROSE-UV

www.ledil.com/rose

LEDiL's next generation optics for UV-LEDs offers substantially improved performance and durability over the previous generation. With the introduction of new materials such as optical grade silicones LEDiL has been able to considerably increase optical efficiency and UV resistance of the optics.

Name	Beam type	H	D	Typ. FWHM	Typ. Eff.	Typ. cd/lm
G2-NIS033U-S	Spot	12,9	21,6x21,6	20	92	TBA
G2-NIS033U-M	Medium	12,9	21,6x21,6	25	91	TBA
G2-NIS033U-W	Wide	12,9	21,6x21,6	43	91	TBA
G2-ROSE-UV-SS	Smooth spot	12,9	21,6x21,6	TBA	TBA	TBA
G2-ROSE-UV-M	Medium	12,9	21,6x21,6	TBA	TBA	TBA
G2-ROSE-UV-W	Wide	12,9	21,6x21,6	TBA	TBA	TBA



The information contained herein is the property of LEDiL Oy, Satorankatu 10, FI-24240 SALO, Finland, and is subject to change without prior notice. Please visit www.ledil.com for additional information, such as the latest photometric files, 3D mechanical models, and application notes relating to handling, gluing and taping.

LAURA GenII

www.ledil.com/laura

LAURA GenII is the next generation of LEDiL's classic LAURA family featuring new thinner holder design. GenII optics are backwards compatible with previous generations and offer the same beam specifications and exceptional quality of light at even more affordable price.

Name	H	D	Typ. FWHM	Typ. Eff.	Typ. cd/lm
G2-LAURA-D-P	13.1	21.6x21.6	13	93	9,3
G2-LAURA-M-P	13.1	21.6x21.6	30	92	2,6
G2-LAURA-O-P	13.1	21.6x21.6	40 x 13	91	4,8
G2-LAURA-RS-P	13.1	21.6x21.6	8	93	33,2
G2-LAURA-SS-P	13.1	21.6x21.6	11	93	16,5
G2-LAURA-W-P	13.1	21.6x21.6	46	91	1,55
G2-LAURA-WW-P	13.1	21.6x21.6	66	86	0,7
G2-LAURA-R-XW-P	13.1	21.6x21.6	72	86	0,6
G2-LAURA-R-W-P	13.1	21.6x21.6	70	81	0,8
G2-LAURA-SS-WAS-P	13.1	21.6x21.6	Asym.	92	11,6
G2-LAURA-O-WAS-P	13.1	21.6x21.6	Asym.	84	2,6
G2-LAURA-O90-P	13.1	21.6x21.6	15+40	90	4,4



LAURA

www.ledil.com/laura

Name	H	D	Typ. FWHM	Typ. Eff.	Typ. cd/lm
LAURA-D	13	21.6x21.6	15	88	6,2
LAURA-M	13	21.6x21.6	29	88	2,5
LAURA-O	13	21.6x21.6	40 x 12	88	4,3
LAURA-RS	13	21.6x21.6	8	93	30,5
LAURA-SS	13	21.6x21.6	11	91	14,5
LAURA-W	13	21.6x21.6	42	88	1,7
LAURA-WW	13	21.6x21.6	66	86	0,70
LAURA-XW	13	21.6x21.6	72	85	0,6
LAURA-R-W	13	21.6x21.6	70	77	0,52



LEILA GenII

www.ledil.com/leila

New thinner holder design.
Backwards compatible with previous generations.

Code	H	D	Typ. FWHM	Typ. Eff.	Typ. cd/lm
CA14505_G2-LXP2-RS2-P	14.7	21.6	8,5	90	22,1
CA14506_G2-LXP2-RS2	14.7	21.6	8,5	90	22,1
CA14507_G2-LXP2-D-P	14.7	21.6	9,7	88	19,8
CA14508_G2-LXP2-D	14.7	21.6	9,7	88	19,8
CA14509_G2-LXP2-M-P	14.7	21.6	22	88	5,1
CA14510_G2-LXP2-M	14.7	21.6	22	88	5,2



LEILA

www.ledil.com/leila

Beam type code*	H	D	Typ. FWHM	Typ. Eff.	Typ. cd/lm
-MD	14.6	21.6	24	90	TBA
-O	14.6	21.6	39 x 11	88	4,8
-O-90	14.6	21.6	11 x 39	89	4,6
-REC	14.6	21.6	37 x 26	84	2,4
-RS	14.6	21.6	9,6	94	23,1
-RS2	14.6	21.6	8,5	90	22,1
-SS	14.6	21.6	12	TBA	TBA
-W	14.6	21.6	42	90	1,6
-WW	14.6	21.6	42	TBA	TBA
-WAS	14.6	21.6	Asymm.	84	4,0



*Subject to the LED type, check www.ledil.com/leila for actual values.

Single lenses

SIRI-A

www.ledil.com/siri

SIRI family is a series of specialty optics for wide area lighting applications.

Code	Beam type	H	D	Typ. FWHM	Typ. Eff.	Typ. cd/lm
SIRI-A	Wide area lighting	4,2	13,9x13,9	74+134	95	0.3
SIRI-DOME	LED cover with no effect on the light	4,9	13,9x13,9	144	97	0.24
SIRI-DIFF		4,9	13,9x13,9	144	95	0.22



SIRI-A
PMMA
Beam type:
Wide area lighting

IRENE

www.ledil.com/irene

LEDiL's IRENE is especially developed with square beam-pattern for IR-CCT camera chip compatibility.

Name	H	D	Typ. FWHM
IRENE-IR-4	14,3	21,6	67° + 67°
IRENE-IR-8	14,3	21,6	32° + 32°
IRENE-IR-12	14,3	21,6	25° + 25°
IRENE-IR-16	14,3	21,6	17° + 17°
IRENE-IR-25	14,3	21,6	16° + 16°



IRENE-IR-16
PMMA / PC
H: 14,3 mm, D: 21,6 mm
FWHM: 20° + 19° [sim.]

IRIS

www.ledil.com/iris

Code	Typ. FWHM	Typ. eff.	Typ. cd/lm
IRIS-M	26	86	2,7
IRIS-O	39 x 28	84	1,9
IRIS-RS	5	93	66



IRIS-O
PMMA / PC
H: ≈29 mm, D: 38 mm
Beam type: Oval

MIRA

www.ledil.com/mira

Available with or without holder.

Name	Beam type	Typ. FWHM	Typ. Eff.	Typ. cd/lm
MIRA-M	Medium	28	83	2,1
MIRA-W	Wide	38	82	1,5
MIRA-WW	Extra wide	58	83	0,9



MIRA-M
PC / PC
H: ≈16 mm, D: ≈35 mm
Beam type: Medium

EVA

www.ledil.com/eva

Name	Beam type	Typ. FWHM	Typ. Eff.	Typ. cd/lm
EVA-D	Diffused spot	16	80	4,92
EVA-M	Medium	24	89	3,2
EVA-O	Oval	38 x 17	85	3,06
EVA-S	Spot	13	93	6,3
EVA-W	Wide	38	83	1,4
EVA-WW	Extra wide	53	82	1,7
C10685_EVA-M	Medium	26	89	2,8



EVA-WW
PMMA / PC
H: 16,4 mm, D: 37,7 mm
Beam type: Extra wide

EYA

www.ledil.com/eya

Name	Beam type	H	D	Typ. FWHM
EYA-O	Oval	29,1	30,4	8+34
EYA-S	Spot	29,1	30,4	7



EYA-O
PMMA / PC
H: 29,1 mm
D: 30,4 mm
Beam type: Oval

IRINA

www.ledil.com/irina

Name	Beam type	H	D	Typ. FWHM	Typ. eff.	Typ. cd/lm
IRINA-RS	Real spot	11,7	24,7	7	93	12,2



IRINA-RS
PMMA / PC
H: 11,7 mm
D: 24,7 mm
Beam type: Real spot

EMILY

www.ledil.com/emily

Name	H	D	Typ. FWHM	Typ. Eff.	Typ. cd/lm
EMILY-SS-WAS	14,8	26	8	90	12
EMILY-O-WAS	14,8	26	43 x 10	87	3,6
EMILY-D	14,8	26	11	91	14
EMILY-M	14,8	26	18	91	7,4
EMILY-M2	14,8	26	29	89,2	3,05
EMILY-O	14,8	26	44 x 10	89	4,5
EMILY-O-90	14,8	26	45 x 10	89	4,2
EMILY-SS	14,8	26	11	80	13,4
EMILY-W	14,8	26	39	86	1,5
EMILY-WWW	14,8	26	58	86	1
EMILY-RS	14,8	26	8	90	29,5



EMILY-O-WAS
PMMA,
H: 14,8 mm, D: 26 mm
Beam type: Tilted oval

HEIDI

www.ledil.com/heidi

Name	D	Typ. FWHM	Typ. Eff.	Typ. cd/lm
HEIDI-D	21,6	10	90	14,8
HEIDI-M	21,6	26	89	3,8
HEIDI-O	21,6	49 x 11	87	4,5
HEIDI-O-90	21,6	13 x 44	87	4,7
HEIDI-RS	21,6	8	92	21,8
HEIDI-SS	21,6	15	90	6,8
HEIDI-W	21,6	32	87	2,6
HEIDI-W2	21,6	45	80	1,1
HEIDI-WR	21,6	31	87	4,1
HEIDI-REC	21,6	35 + 57	76	1,37
HEIDI-REC-90	21,6	36 + 57	78	1,3



HEIDI-WR
PMMA
H: 11,7 mm, D: 21,6 mm
Beam type: Round

FWHM angles, efficiencies and cd/lm values contained herein are typical values. Actual measured values depend of the specific LED/ optic combination. Go to www.ledil.com for LED specific values and optical datasheets.

Single lenses

TITANUM / SPUTNIK

www.ledil.com/products

TITANUM / SPUTNIK family of optics for Osram and Seoul LEDs. Versions that have ordering code ending with -C have metallized coating making them suitable for potting.

Name	Beam type	Typ. FWHM	Typ. Eff.
TITANUM/SPUTNIK-M	Medium	26	87
TITANUM/SPUTNIK-O	Oval	36 x 8	89
TITANUM/SPUTNIK-SS	Smooth spot	9	84
TITANUM/SPUTNIK-W	Wide	66	71



AMELIA

www.ledil.com/products

Name	Beam type	H	D	Typ. FWHM	Typ. Eff.	Typ. cd/lm
AMELIA-S	Spot	27,1	45	14	93	10.0



KIKI

www.ledil.com/kiki-a

KIKI-A lens designed for backlighting applications. It is carefully optimized for maximally uniform light distribution even with wider LED distances.

Name	Beam type	H	D	Typ. FWHM	Typ. Eff.	Typ. cd/lm
KIKI-A	Wide area lighting	5,9	21,6x14	163	92	0.28



JULIA-A

www.ledil.com/julia

Name	Beam type	H	D	Typ. FWHM	Typ. Eff.	Typ. cd/lm
JULIA-A	Wide area lighting	4,8	18,8	88+160	90	0.24



BILLIE

www.ledil.com/billie

BILLIE, a rectangular wall-washing optic with excellent beam uniformity. This uniquely innovative product is designed especially for indoor and outdoor architectural and billboard lighting. BILLIE is the perfect solution for small concealed fixtures.

Name	Beam type	H	D	Typ. FWHM	Typ. Eff.	Typ. cd/lm
BILLIE-A	Asymm.	16,1	21,5	Asymm.	88	2.1
BILLIE-B	Asymm.	16,1	21,5	Asymm.	93	2.2



BILLIE-A
PMMA / PC
Beam type: Asymm.

FLARE

www.ledil.com/flarefamily

Name	H	D	Typ. FWHM	Typ. eff.	Typ. cd/lm
FLARE-B	12.69	29 x 23	102 x 11	93	1,6
FLARE-C	14.55	24.5 x 24.5	87 x 8	93	3,2
FLARE-C-D	14.55	24.5 x 24.5	95 x 21	93	1
FLARE-MAXI	16.7	33.9 x 33.3	99 x 13	94	2,3
FLARE-MAXI-D	16.7	33.9 x 33.3	108 x 15	94	1,8
FLARE-MAXI-T	15.5	43 x 28.4	82+21	93	1,3
FLARE-MINI-A	8.6	16	106 x 20	94	1,1
FLARE-MINI-AD	8.6	16	98 x 19	94	1,1
FLARE-MINI-AD-PIN	8.6	16	98 x 19	94	1,1
FLARE-MINI-A-PIN	8.6	16	106 x 20	94	1
LEDIL-FLARE	16.2	23 x 25	138 x 20	92	1,3



FLARE-MAXI-T
PMMA
H: 15.5 mm
D: 45 x 28.4 mm
Beam type: Asymm.

VERONICA

www.ledil.com/veronica-family

TIR lens for installations with potting resin.

Name	Beam type	H	D	Typ. FWHM	Typ. Eff.	Typ. cd/lm
VERONICA-O	Oval	12.2	26	54 + 11	84	4,2
VERONICA-RS	Real spot	12.2	26	12	90	18,4
VERONICA-SQ-O	Oval	12.2	22.5x22.5	56+12	82	3,2
VERONICA-SQ-M	Medium	12.2	22.5x22.5	30	89	3,1
VERONICA-SQ-W	Wide	12.2	22.5x22.5	52	92	1,2
VERONICA-SQ-MINI-RS	Real spot	8,86	13.9x13.9	17	92	11
VERONICA-SQ-MINI-O	Oval	8,86	13.9x13.9	15+50	84	3,8
VERONICA-SQ-MINI-M	Medium	8,86	13.9x13.9	TBA	TBA	TBA
VERONICA-SQ-MINI-W	Wide	8,86	13.9x13.9	TBA	TBA	TBA



VERONICA
VERONICA-SQ
VERONICA-SQ-MINI

FWHM angles, efficiencies and cd/lm values contained herein are typical values. Actual measured values depend of the specific LED/ optic combination. Go to www.ledil.com for LED specific values and optical datasheets.

WINNIE

www.ledil.com/winnie

Hyper-reflective white PC holder and optical grade PMMA for high efficiency. Compatible with a range of COB's with LES size up to 21 mm. Features unique flat folded TIR design and Zhaga Book 3 compatible fastening.

Name	Beam type	H	D	Typ. FWHM	Typ. Eff.	Typ. cd/lm
WINNIE-S	Spot	19,3	49,8	22	88	3,4
WINNIE-M	Medium flood	19,3	49,8	35	86	1,8
WINNIE-W	Wide flood	19,3	49,8	50	88	1,3
WINNIE-O	Oval	19,3	49,8	63+24	89	1,5



WINNIE

CRYSTAL

www.ledil.com/crystal

LEDiL's CRYSTAL and CRYSTAL-MINE lenses offer unsurpassed light quality for a variety of lighting applications. A narrow beam combined with over 90% efficiency means more light for tough tasks in demanding environments. According to mining head lamp specifications CRYSTAL-MINE has 10% added illumination over the cut-off area. In comparison CRYSTAL is designed to have a tight uniform beam and a maximum candela peak.

Name	Beam type	H	D	Typ. FWHM	Typ. eff.	Typ. cd/lm
CRYSTAL-RS	Real spot	28,7	49,7	5.1	89	67,9
CRYSTAL-MINE	Spot	28,7	49,7	4.9	90	59,6



CRYSTAL-RS
PMMA/PC

Beam type: Real spot

SEANNA-A

www.ledil.com/products

SEANNA's patent pending design has two optical elements. A primary TIR lens ensures that all light will hit the secondary Fresnel resulting in maximum performance and efficiency.

- Optimized for a variety of high power LED's
- Peak value at 25 m up to 800 cd/lm and spot as narrow as 1-3° depending on LED

Name	Beam type	H	D	Typ. FWHM	Typ. Eff.
SEANNA-A	Real Spot	79	152,6	2.3	87



SEANNA-A

SATU

www.ledil.com/satu

Name	Beam type	LEDs	H	D	Typ. FWHM	Typ. Eff.	Typ. cd/lm
SATU-M	Medium	3	8,9	21,8	27	91	2,9
SATU-O	Oval	3	8,9	21,8	42 x 22	86	2,5
SATU-S	Spot	3	8,9	21,8	19	90	4,9
SATU-W	Wide	3	8,9	21,8	33	86	1,9



SATU-O

CUTE

www.ledil.com/cute

Name	Beam type	LEDs	H	D	Typ. FWHM	Typ. Eff.	Typ. cd/lm
CUTE-3-M	M	3	15	35	24	88	3,8
CUTE-3-S	S	3	15	35	11	TBA	TBA
CUTE-3-SS	SS	3	15	35	12	90	11,3
CUTE-3-W	W	3	15	35	39	83	1,6
CUTE-3-WW	WW	3	15	35	58	93	TBA
CUTE-4-M	M	4	15	35	22	84	4,26
CUTE-4-SS	SS	4	15	35	11	88	13,2
CUTE-4-W	W	4	15	35	38	TBA	TBA



CUTE

GT3

www.ledil.com/gt3

Name	Beam type	LEDs	H	D	Typ. FWHM	Typ. Eff.	Typ. cd/lm
GT3-M	M	3	9	35	30	89	2,2
GT3-S	S	3	9	35	18	90	4,5
GT3-W	W	3	9	35	40	88	1,6
GT3-WW	WW	3	9	35	47	90	1,1



GT3-M

3 LEDs
PMMA
H: 9 mm
D: 35 mm
Beam type: Medium

GT4

www.ledil.com/gt4

Name	Beam type	LEDs	H	D	Typ. FWHM	Typ. Eff.	Typ. cd/lm
GT4-M	M	4	9	35	28	88	2,5
GT4-S	S	4	9	35	21	90	3,3
GT4-W	W	4	9	35	38	89	1,7
GT4-WW	WW	4	9	35	53	90	1,1



GT4

ANGIE

www.ledil.com/angie

Name	Beam type	LEDs	H	D	Typ. FWHM	Typ. Eff.	Typ. cd/lm
ANGIE-S	S		10,7	34	12	93	11,8
ANGIE-M	M		10,7	34	19	89	6,2
ANGIE-M2	M2		10,7	34	26	88	3,3
ANGIE-W	W		10,7	34	29	84	2,4



ANGIE-S

FWHM angles, efficiencies and cd/lm values contained herein are typical values. Actual measured values depend of the specific LED/optic combination. Go to www.ledil.com for LED specific values and optical datasheets.

Multi-lens arrays

ANNA

www.ledil.com/anna

One of LEDiL's largest lens array family and most popular product families. ANNA family is versatile with optics in two diameters, wide selection of beam angles and sources.

Name	Beam type	LED sources	D	H	Typ. FWHM	Typ. Eff.	Typ. cd/lm					
ANNA-40-3-M	M	3	40	10,7	22	88	3,7					
ANNA-40-4-M		4										
ANNA-40-5-M		5										
ANNA-40-6-M		6										
ANNA-40-7-M		7										
ANNA-50-3-M		3						50	10,7	25	87	3,2
ANNA-50-4-M		4										
ANNA-50-5-M	5											
ANNA-50-6-M	6											
ANNA-50-7-M	7											
ANNA-40-7-M2	M	7	40	10,7	25	87	3,2					
ANNA-40-3-S	S	3	40	10,7	15	91	8,5					
ANNA-40-4-S		4										
ANNA-40-5-S		5										
ANNA-40-6-S		6										
ANNA-40-7-S		7										
ANNA-50-3-S		3						50	10,7	15	85	TBA
ANNA-50-4-S		4										
ANNA-50-5-S	5											
ANNA-50-6-S	6											
ANNA-50-7-S	7											
ANNA-40-7-S-PC	S	7	40	10,7	15	85	TBA					
ANNA-40-3-W	W	3	40	10,7	32	86	1,9					
ANNA-40-4-W		4										
ANNA-40-5-W		5										
ANNA-40-6-W		6										
ANNA-40-7-W		7										
ANNA-50-3-W		3						50	12,5	64	90	0,9
ANNA-50-4-W		4										
ANNA-50-5-W	5											
ANNA-50-6-W	6											
ANNA-50-7-W	7											
ANNA-40-7-WW	WW	6	40	12,5	64	90	0,9					

ANNA-50-5-S



ANNA-40-4-S
D: 40 mm
4 LEDs
PMMA
Beam type: Spot



ANNA-40-3-M
D: 40 mm
3 LEDs
PMMA
Beam type: Medium



NIS83-MX-7-M



NIS83-MX-5-W

TAMPA

www.ledil.com/tampa

Name	Beam type	LEDs	H	D	Typ. FWHM	Typ. Eff.
NIS83-MX-7-M	M	7	11,4	38	20	90
NIS83-MX-7-MD	MD	7	11,4	38	22	91
NIS83-MX-7-W	W	7	11,4	38	37	89
NIS83-MX-7-WW	WW	7	11,4	38	57	87
RER-7-MD	MD	7	10,6	38	33	85
RER-7-S	S	7	10,6	38	19	89
RER-7-W	W	7	10,6	38	41	82
RER-7-WW	WW	7	10,6	38	53	90

PENTA

www.ledil.com/penta

Name	Beam type	LEDs	H	D	Typ. FWHM
NIS83-MX-5-W	W	5	6,8	35,5	36
PENTA-5-M	M	5	7,2	35,5	30
RER-5-M	M	5	6,8	35,5	28

The information contained herein is the property of LEDiL Oy, Satorankatu 10, FI-24240 SALO, Finland, and is subject to change without prior notice. Please visit www.ledil.com for additional information, such as the latest photometric files, 3D mechanical models, and application notes relating to handling, gluing and taping.

QUAK

www.ledil.com/quak

Name	Beam type	LEDs	H	D	Typ. FWHM
NIS83-MX-4-SS	SS	4	15,23	50	15
NIS83-MX-4-M	M	4	15,23	50	21
NIS83-MX-4-W	W	4	15,23	50	49

NIS83-MX-4-M

D: 50 mm
4 LEDs
PMMA
Beam type:
Medium



MELODY

www.ledil.com/melody

Name	Beam type	LEDs	H	D	Typ. FWHM	Typ. Eff.	Typ. cd/lm
MELODY-4-M	M	4	11,9	50,6	29	89	2,8
MELODY-3-M	M	3	11,9	50,6	34	92	2,1
MELODY-4-S	S	4	11,9	50,6	12	89	14,8

MELODY-3-M

D: 50,6 mm
H: 11,9 mm
3 LEDs
PMMA
Beam type:
Medium



DOLLY

www.ledil.com/dolly

Name	Beam type	LEDs	H	D	Typ. FWHM
APOLLO-3-S	S	3	19,4	50	10
LAIKA-3-S	S	3	20,4	50	10
TITANUM-3-S	S	3	18,4	50	15
TITANUM-3-M	M	3	19,9	50	30
LAIKA-3-M	M	3	20,4	50	28



DOLLY

TUIJA

www.ledil.com/tuija

Name	Beam type	LEDs	H	D	Typ. FWHM	Typ. Eff.	Typ. cd/lm
TUIJA-3-M	M	3	14,5	50	16	84	5,6
TUIJA-3-M2	M	3	14,5	50	35	87	2
TUIJA-3-SS	SS	3	14,5	50	12	90	12,9
TUIJA-3-W	W	3	14,5	50	53	86	0,9



TUIJA

MARTHA

www.ledil.com/martha

Name	Beam type	LEDs	H	D	Typ. FWHM
APOLLO-LAIKA-3-W	W	3	17	50	49
NIS83-MX-3-W	W	3	15	50	48
PLATINUMROCKET-3-W	w	3	16	50	43
PLATINUMROCKET-3-SS	SS	3	16	50	14
PLATINUMROCKET-3-M	M	3	16	50	20
NIS83-MX-3-M	M	3	16	50	22

PLATINUM
ROCKET-3-SS

3 LEDs, PMMA
Beam type:
Smooth spot



EMY

www.ledil.com/emy

Name	Beam type	LEDs	H	D	Typ. FWHM
EMY-S	Smooth spot	6	14,4	50	92

EMY-S

6 LEDs
PMMA
Beam type:
Smooth spot



Multi-lens arrays

SANDRA

www.ledil.com/sandra

SANDRA is the largest diameter optical array family LEDiL has. It suits in many applications like for example in retrofits, retail lighting and track mounted lighting fixtures.

Name	Beam type	LEDs	H	D	Typ. FWHM	Typ. Eff.	Typ. cd/lm
SANDRA-12-M	Medium	12	11,1	67	28	88	2,4
SANDRA-12-W	Wide	12	11,1	67	31	88	2,4
SANDRA-12-S	Spot	12	11,1	67	14	91	13,2
SANDRA-12-O	Oval	12	11,1	67	42+19	90	2,8



VIRPI

www.ledil.com/virpifamily

Name	Beam type	LEDs	H	D	Typ. FWHM	Typ. Eff.	Typ. cd/lm
VIRPI-S	Spot	25	9,4	74,9x74,9	15	94	7,5
VIRPI-M	Medium	25	9,4	74,9x74,9	29	92	2,7
VIRPI-W	Wide	25	9,4	74,9x74,9	42	91	1,6



PETUNIA

www.ledil.com/petunifamily

SOLUTION FOR PLANT LIGHTING

- A special lens for deep red, deep blue and white OSRAM OSLON LEDs
- Smooth mixing of colours at a short distance resulting in a uniform growing light for plants
- PCB available with the right spread of colours
- Control algorithm for switching on / off white and coloured LEDs

Name	LEDs	H	D	Typ. FWHM	Typ. Eff.	Typ. cd/lm
PETUNIA	12	7,4	29,5x46,5	29	91	2,2



VANESSA

www.ledil.com/vanessafamily

Name	Beam type	LEDs	H	D	Typ. FWHM	Typ. Eff.	Typ. cd/lm
VANESSA-M	Medium	12	8	295 x 16	26	89	TBA
VANESSA-O	Oval	12	8	295 x 16	42+19°	82	TBA
VANESSA-S	Spot	12	8	295 x 16	17	90	TBA
VANESSA-B-O	Oval	12	8	295 x 16	45+21°	88	1,8
VANESSA-B-S	Spot	12	8	295 x 16	22	93	4,1
VANESSA-B-W	Wide	12	8	295 x 16	37	92	1,73



LUCIA

www.ledil.com/lucia

- Very narrow flood with a good cut-off
- Unique tilted TIR design for maximum light control

Typical applications

- Outdoor up-/downlighting applications
- Surgery light
- Flood light
- High-speed camera lighting
- Architectural lighting



LUCIA-S

D: 90x90 mm

H: 34,68 mm

4 LEDs

PMMA

Sim. FWHM: 15°, Sim. eff.: 92%
Beam type: Spot

Code	Beam type	LEDs	H	D	Typ. FWHM	Typ. eff.	Typ. cd/lm
LUCIA-S	Spot	4	34,68	90 x 90	15	93	21.2
LUCIA-D	Diffused spot	4	34,68	90 x 90	7	88	37.5

IDA

www.ledil.com/idafamily

- 50 x 50 x 6.3 mm
16-up lens array
- A lens and optional clip-on frame for 1.6 mm PCB.
- Modular system: optics held in place with installation frame
- Optional frames with integrated shades (UGR) planned
- Possibility to use only lens (glue needed)
- Designed for mid power LEDs



Name	Beam type	LEDs	H	D	Typ. FWHM	Typ. Eff.
IDA16-M	Narrow	16	9,2	50x50	40	92
IDA16-WW	Very wide	16	9,2	50x50	71	93
IDA16-O	Oval	16	9,2	50x50	90+33	92

FWHM angles, efficiencies and cd/lm values contained herein are typical values. Actual measured values depend of the specific LED/ optic combination. Go to www.ledil.com for LED specific values and optical datasheets.

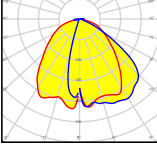
Multi-lens arrays

SHELLY

www.ledil.com/shelly

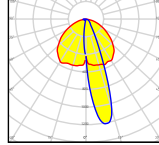
Quality shelf lighting

SHELLY-T-6X1-N is designed for overall illumination of shelves and SHELLY-T-6X1-WAS to light the back wall of the shelf.



SHELLY-T-6X1-N

6 LEDs
PMMA
D: 119.8x19.6mm
H: 7 mm



SHELLY-T-6X1-WAS

6 LEDs
PMMA
D: 119.8 x19.6mm
H: 7,6 mm

ZENIA

www.ledil.com/zenia

ZENIA optics are designed to illuminate the backdrop inside the shelves. Also suited for wall-washing and stair lighting applications. Linear optics that work with any distance between the mid-power LEDs. Modular breakable design at 15 mm intervals allows installation to any width. Designed to be installed as such, into an aluminum profile or as an recessed luminaire.



ZENIA
PMMA
H: 5,97 mm
D: 16,2 x 119,8 mm

FLORENCE-1R-GC

www.ledil.com/products

- Fixed led pitch of 24 x 11.62mm
- Excellent longitudinal glare control to allow below 19 UGR ratings
- Optimized LED layout to increase light in the desired area
- Special surface smoothens out and removes unwanted color-over-angle artefacts
- Optional clips available for easier installation and continuous rows

NEW!



FLORENCE-1R-GC-Z90
D: 282.6 x 19 mm
H: 6.9 mm
24 LEDs
PMMA

FLORENCE-3R-IP

www.ledil.com/florencefamily

- Modified FLORENCE structure to enable ingress protection
- Easy to install silicone gasket protects against dirt and dust up to IP54 class.
- End and joint parts allow sealing, fastening and forming of continuous sealed lens rows.
- Joint part provides sealing between lenses when more than one lenses are assembled in row

NEW!

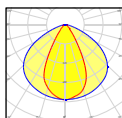


FLORENCE-3R-IP-Z90
D: 321 x 75 mm
H: 10.5 mm
24 LEDs
PMMA

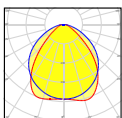
FLORENCE-1R

www.ledil.com/florence-1r

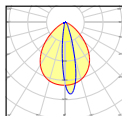
- Linear optical design is compatible with a range of different LED pitches
- Retaining clips that connect lenses into a continuous row
- Lens can easily be snapped into three smaller 95 mm long pieces



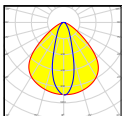
FLORENCE-1R-Z60
D: 19,5 x 286 mm
H: 7,6 mm
PMMA



FLORENCE-1R-Z90
D: 19,5 x 286 mm
H: 7 mm
PMMA



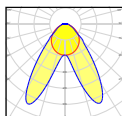
FLORENCE-1R-MAXI-WG
D: 21,7 x 286 mm
H: 11,04 mm
PMMA



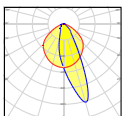
FLORENCE-1R-O
D: 19,5 x 286 mm
H: 7 mm
PMMA



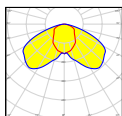
FLORENCE-1R-UP



FLORENCE-1R-Z2T25
D: 19,5 x 286 mm
H: 6,4 mm
PMMA



FLORENCE-1R-ZT25
D: 19,5 x 286 mm
H: 7,13 mm
PMMA



FLORENCE-1R-UP
D: 19,5 x 286 mm
PMMA

Name	Beam type	Typ. FWHM	Typ. eff.	Typ. cd/lm
FLORENCE-1R-Z90	Extra wide	90 + 110	94	0,4
FLORENCE-1R-Z60	Medium	58 + 111	94	0,6
FLORENCE-1R-ZT25	Asymmetric	TBA	86	1,0
FLORENCE-1R-Z2T25	Double asymm.	106 + 80	92	0,49
FLORENCE-1R-O	Oval	96 + 32	94	0,9
FLORENCE-1R-MAXI-WG	Asymmetric	TBA	94	1,4
FLORENCE-1R-UP	Wide area lighting	TBA	TBA	TBA
FLORENCE-1R-CLIP-A	Clip for installation on a plate			
FLORENCE-1R-CLIP-B	Clip for installation on a profile			
FLORENCE-1R-CLIP-C	Clip for fastening of FLORENCE-1R optics and 24 mm wide Zhaga modules			

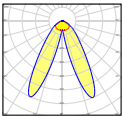
FWHM angles, efficiencies and cd/lm values contained herein are typical values. Actual measured values depend of the specific LED/optic combination. Go to www.ledil.com for LED specific values and optical datasheets.

Multi-lens arrays

FLORENCE-3R

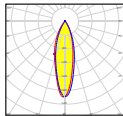
www.ledil.com/florencefamily

- Zhaga book 7 compliant modular solution
- Suited for a range of mid-power LEDs
- Unified Glare Rating below 19 achievable with the additional FLORENCE-shades



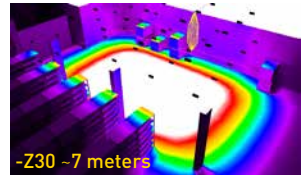
FLORENCE-ZT25

D: 61 x 286 mm
H: 11 mm
PMMA

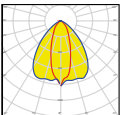


FLORENCE-Z30

D: 61 x 286 mm
H: 8.5 mm
PMMA

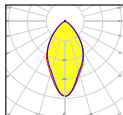


NEW!



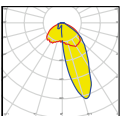
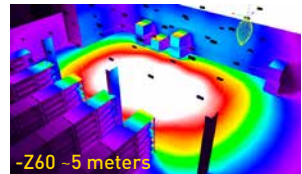
FLORENCE-O

D: 61 x 286 mm
H: 8.45 mm
PMMA



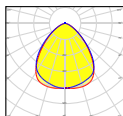
FLORENCE-Z60

D: 61 x 286 mm
H: 8.5 mm
PMMA



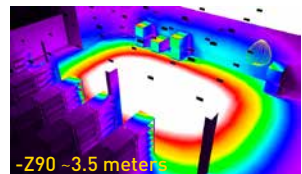
FLORENCE-ZT25-S

D: 61 x 286 mm
H: 11,38 mm
PMMA



FLORENCE-Z90

D: 61 x 286 mm
H: 8.45 mm
PMMA



Name	Beam type	Typ. FWHM	Typ. eff.	Typ. cd/1m
FLORENCE-Z30	M	29	94	2,2
FLORENCE-Z60	W	58	88	0,8
FLORENCE-Z90	WWW	92	86	0,4
FLORENCE-ZT25	Asymmetric	Asymm.	94	0,6
FLORENCE-O	Oval	84 + 35	89	TBA
FLORENCE-ZT25-S	Single-sided asymmetric oval	Asymm.	94	0,6
FLORENCE-3R-SHD-BLK	Black shade to obtain lower UGR			
FLORENCE-3R-SHD-GR	Grey shade to obtain lower UGR			
FLORENCE-3R-SHD-WHT	White shade			

The information contained herein is the property of LEDIL Oy, Satorankatu 10, FI-24240 SALO, Finland, and is subject to change without prior notice. Please visit www.ledil.com for additional information, such as the latest photometric files, 3D mechanical models, and application notes relating to handling, gluing and taping.

MINNIE

www.ledil.com/minnie

Available with or without holder. Diameter 35 mm (32,4 mm without holder), typical height ≈15 mm.

MINNIE-LT-W

PC
H: 15,6 mm, D: 35 mm
Beam type: Wide

MINNIE-LT-M

PC
H: 15,6 mm, D: 35 mm
Beam type: Medium

Code	Beam type	Typ. FWHM	Typ. Eff.	Typ. cd/lm
MINNIE-M	Medium	24	90	2,6
MINNIE-W	Wide	33	89	2
MINNIE-WWW	Extra wide	69	91	0,9
MINNIE-XW	Extra ² wide	90	92	0,5
MINNIE-LT-M	Medium	21	92	2
MINNIE-LT-W	Wide	29	92	2
MINNIE-LT-WWW	Extra wide	62	93	0,87
MINNIE-LT-XW	Extra ² wide	TBA	TBA	TBA

MINNIE-LT



BOOM

www.ledil.com/boom

Code	Typ. FWHM	Typ. cd/lm
BOOM-M	32	1,9
BOOM-S	18	3,6
BOOM-W	55	1,1
BOOM-XW	70	0,67

BOOM-XW

Hyper Reflective PC
H: ≈14 mm
D: 22,2 mm
Beam type: Extra² W



BRITNEY

www.ledil.com/britney

Code	Typ. FWHM	Typ. eff.
BRITNEY-M	28	92
BRITNEY-W	48	92
BRITNEY-XW	74	96

BRITNEY-XW

Hyper Reflective PC
H: 38,4 mm, D: 70 mm
Beam type: Extra² Wide
FWHM: 74°



BOOMERANG

www.ledil.com/boomerang

BOOMERANG

Metallized PC
H: ≈14 mm
D: 22,2 mm
Beam type: Spot



BRIDGET / LILY / CINDY

www.ledil.com/products

Code	Typ. FWHM	Typ. eff.	Typ. cd/lm
-M	41	87	1,5
-S	31	89	1,5
-W	57	88	1,1
BRIDGET-S-UNI	44	85	1,0
BRIDGET-M-UNI	52	84	1,1
BRIDGET-W-UNI	61	87	1,0

-S

Metallized PC
H: 12,8 mm
D: 22,6 mm
Beam type: Spot



BROOKE-G2

www.ledil.com/brooke-g2

Brooke-G2 family is optimized to allow to construct more compact sized luminaires with modern high density COBs with smaller LES's. LEDIL's patented BARBARA-RZ color mixing sublens can be attached between reflector and holder to achieve multi-color or tunable white light applications for smooth and color-over-angle artefact free lighting.



Name	H	D	Typ. FWHM	Typ. Eff.	Typ. cd/lm
BROOKE-G2-S	19.7	45	18	92	TBA
BROOKE-G2-M	19.7	45	28	92	TBA
BROOKE-G2-W	19.7	45	47	92	TBA
BROOKE-G2-S-RZ	21.7	45	17	TBA	TBA
BROOKE-G2-M-RZ	21.7	45	24	TBA	TBA
BROOKE-G2-W-RZ	21.7	45	38	TBA	TBA
BROOKE-G2-SOCKET-V8	Socket for Bridgelux-V8				
BROOKE-G2-SOCKET-CXA1850	Socket for Cree CXA1850				
BROOKE-G2-SOCKET-CLL020	Socket for Citizen CLL020				
BROOKE-G2-SOCKET-CXA1520	Socket for Cree CXA1520				

BROOKE

www.ledil.com/brooke

Name	Typ. FWHM	Typ. Eff.	Typ. cd/lm
BROOKE-S	24	94	5.2
BROOKE-M	28	92	2.2
BROOKE-SCR-M	24	91	2.5
BROOKE-SCR-W	42	91	1.2
BROOKE-W	46	92	1.24
BROOKE-XW	86	94	0.53
BROOKE-SOCKET-VERO10	Socket to position and hold BRX Vero10		



BROOKE-SCR-M
Metalized PC
H: 20.2 mm, D: 45 mm
Beam type: Medium

VENLA

www.ledil.com/venla

Name	Typ. FWHM	Typ. eff.
C11773_VENLA-S	13	TBA
C11775_VENLA-M	28	90
C11776_VENLA-W	45	TBA
C11777_VENLA-WW	56	87
CP12090_VENLA-S-IRIS	18	93



VENLA-WW
Metalized PC
H: 25 mm
D: 45 mm
Beam type: Extra wide

RITA

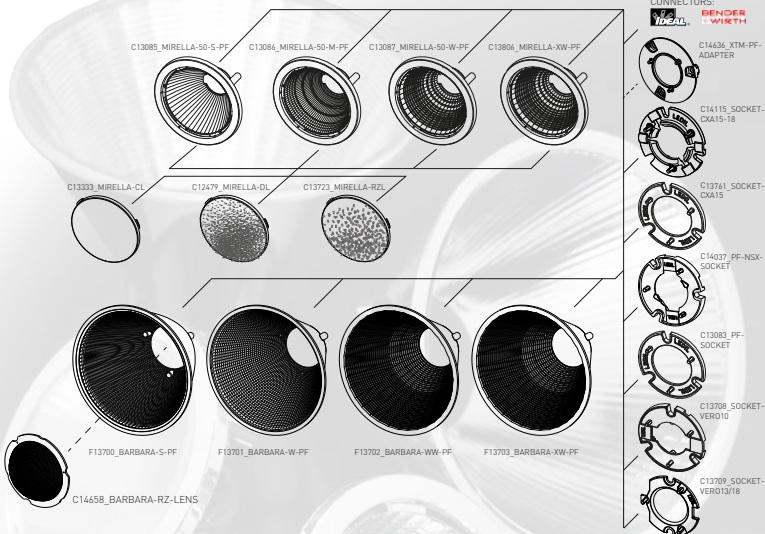
www.ledil.com/rita

Name	Beam type	H	D	Typ. Eff.	Typ. cd/lm
RITA-A	Asymm.	17	36x28,4	87	0,6
RITA-WAS	Asymm.	17	31,9x28,4	85	0,63
RITA-A-RZ	Asymm.	19	35x29	82	0,6
RITA-WAS-RZ	Asymm.	19	35x29	80	0,6



RITA-WAS-RZ
Hyper Reflective PC
H: ≈19 mm, D: 35 x 29 mm
Beam type: Asymm.

LEDiL's PF-system reflectors - Versatile lighting solutions



BARBARA

www.ledil.com/barbara

Code	LED	Typ. FWHM	Typ. eff.
BARBARA-S		17	90
BARBARA-S-PF		TBA	TBA
BARBARA-S-PF	CXA15	21	86
BARBARA-S-PF	VER010	21	88
BARBARA-S-PF	VER013/18	22	91
BARBARA-S-PF-RZ	CXA15	12	85
BARBARA-W-PF		TBA	TBA
BARBARA-W-PF	CXA15	24	85
BARBARA-W-PF	VER010	29	78
BARBARA-W-PF	VER013/18	45	92
BARBARA-W-PF-RZ	CXA15	28	85
BARBARA-WW-PF		TBA	TBA
BARBARA-WW-PF	CXA15	64	84
BARBARA-WW-PF	VER010	68	77
BARBARA-WW-PF	VER013/18	58	91
BARBARA-WW-PF-RZ	CXA15	67	85
BARBARA-XW		75	90
BARBARA-XW-PF		74	91
BARBARA-XW-PF	VER013/18	72	93
BARBARA-XW-PF-RZ	CXA15	73	85
XTM-PF-ADAPTER	Adapter ring for Xicato XTM/XIM modules		
BARBARA-PF-V8	PF connector for BARBARA family, LES sizes up to VER08		



BARBARA-W-PF

Metallized PC
H: 44,7 mm
D: 70 mm
Beam type: Wide



BARBARA-S

Metallized PC
H: 44,7 mm
D: 70 mm
Beam type: Spot



BARBARA-XW

Hyper Reflective PC
H: 44,7 mm
D: 70 mm
Beam type: Extra² W

FWHM angles, efficiencies and cd/lm values contained herein are typical values. Actual measured values depend of the specific LED/optic combination. Go to www.ledil.com for LED specific values and optical datasheets.

MIRELLA

www.ledil.com/mirellafamily

- Manufactured from impact-resistant, UL 94 V-2 rated, polycarbonate
- Available with an optional clear, diffusing or mixing lens, molded from PMMA
- Optimized for use with larger single-die lighting class LEDs and COB array LEDs

Code	Typ. FWHM	Typ. Eff.	Typ. cd/lm	Fastening
MIRELLA-50-M	27	90	2,8	glue
MIRELLA-50-M-CL				glue
MIRELLA-50-M-CL-PF	30	87	2,5	socket, screw
MIRELLA-50-M-DL	34	84	1,9	glue
MIRELLA-50-M-DL-PF	30	85	2,3	socket, screw
MIRELLA-50-M-PF	32	88	1,9	socket, screw
MIRELLA-50-M-PF-RZL	38	81	1,5	socket, screw
MIRELLA-50-M-PF-VERO10	28	85	2,2	socket, screw
MIRELLA-50-M-PF-VERO13/18	34	88	1,8	socket, screw
MIRELLA-50-M-PIN	23	86	3,2	pin
MIRELLA-50-M-PIN-CL	26	84	2,5	pin
MIRELLA-50-M-PIN-DL	34	80	1,6	pin
MIRELLA-50-M-PIN-RZL	34	83	1,6	pin
MIRELLA-50-M-RZL				glue
MIRELLA-50-S	15	92	8,5	glue
MIRELLA-50-S-CL-PF	16	84	6,0	socket, screw
MIRELLA-50-S-DL	20	85	4,9	glue
MIRELLA-50-S-DL-PF	17	84	4,3	socket, screw
MIRELLA-50-S-PF	17	88	5,4	socket, screw
MIRELLA-50-S-PF-RZL	22	82	3,1	socket, screw
MIRELLA-50-S-PF-VERO10	20	88		socket, screw
MIRELLA-50-S-PF-VERO13/18	25	89	2,5	socket, screw
MIRELLA-50-S-PIN	11	87	12,3	pin
MIRELLA-50-S-PIN-DL	15,3	82	5,5	pin
MIRELLA-50-S-PIN-RZL	18	83	3,4	pin
MIRELLA-50-S-RZL				glue
MIRELLA-50-W	41	90	1,6	glue
MIRELLA-50-W-CL	46	84	1,3	glue
MIRELLA-50-W-CL-PF	46	85	1,3	socket, screw
MIRELLA-50-W-DL	47	83	1,2	glue
MIRELLA-50-W-DL-PF	45	85	1,3	socket, screw
MIRELLA-50-W-PF	43	87	1,3	socket, screw
MIRELLA-50-W-PF-RZL	47	81	1,2	socket, screw
MIRELLA-50-W-PF-VERO10	41	85	1,5	socket, screw
MIRELLA-50-W-PF-VERO13/18				socket, screw
MIRELLA-50-W-PIN	33	86	1,6	pin
MIRELLA-50-W-PIN-CL	44	84	1,4	pin
MIRELLA-50-W-PIN-DL	47	81	1,2	pin
MIRELLA-50-W-PIN-RZL	48	81	1,1	pin
MIRELLA-50-W-RZL				glue
MIRELLA-50-XW	80	93	0,6	glue
MIRELLA-50-XW-PF	78	92	0,6	socket, screw
MIRELLA-50-XW-PF-VERO10	74	92	0,6	socket, screw



MIRELLA-50-S-PF

Metallized PC
H: 24 mm
D: 49,9 mm
Beam type: Spot



MIRELLA-50-M-PF

Metallized PC
H: 24,8 mm
D: 49,9 mm
Beam type: Medium



MIRELLA-50-W-DL-PF

Metallized PC / PC
H: 25,5 mm
D: 49,9 mm
Beam type: Wide



CN13905_MIRELLA-50-S-PF-RZL

Metallized PC / PC
H: 24,8 mm
D: 49,9 mm
Beam type: Spot

ANGELETTE

www.ledil.com/angelette-family

ANGELETTE's smooth, glare free and uniform light pattern is optimized for high quality office, hospitality and museum lighting.



Code	Beam type	Diameter	Height	Typ. FWHM	Typ. Eff.	Typ. cd/lm
ANGELETTE-WAS	Asymm.	97.2 x 83.4	84	Asymm.	92	1.4
ANGELETTE-S	Spot	110	57.3	15	90	5.3
ANGELETTE-S-B	Spot	110	57.3	TBA	TBA	TBA
ANGELETTE-S-PLAIN	Spot	110	57.3	10	89	8.1
ANGELETTE-S-B-PLAIN	Spot	110	57.3	TBA	TBA	TBA
ANGELETTE-M	Medium	110	57.3	50	89	1.2
ANGELETTE-M-B	Medium	110	57.3	TBA	TBA	TBA
ANGELETTE-M-PLAIN	Medium	110	57.3	54	89	1.1
ANGELETTE-M-B-PLAIN	Medium	110	57.3	TBA	TBA	TBA
ANGELETTE-WW	Extra wide	110	57.3	70	90	0.8
ANGELETTE-WW-B	Extra wide	110	57.3		TBA	TBA
ANGELETTE-WW-PLAIN	Extra wide	110	57.3		TBA	TBA
ANGELETTE-WW-B-PLAIN	Extra wide	110	57.3		TBA	TBA

TYPICAL APPLICATION OF ANGELETTE-WAS

- Ceiling height 4 m, wall width 12m, 15 luminaires installed on a track suspended 20 cm lower
- Track installed 1.5 m distance from the wall
- Distance between luminaires 80 cm
- Each luminaire flux 4000 lm
Eav: 755 lx, Emax: 1340 lx, U0: 0.1614

ANGELETTE-WAS
 H: 84 mm
 D: 97.2 x 83.4 mm
 Efficiency: 92%
 Beam type: Asymm.

FWHM angles, efficiencies and cd/lm values contained herein are typical values. Actual measured values depend of the specific LED/optic combination. Go to www.ledil.com for LED specific values and optical datasheets.

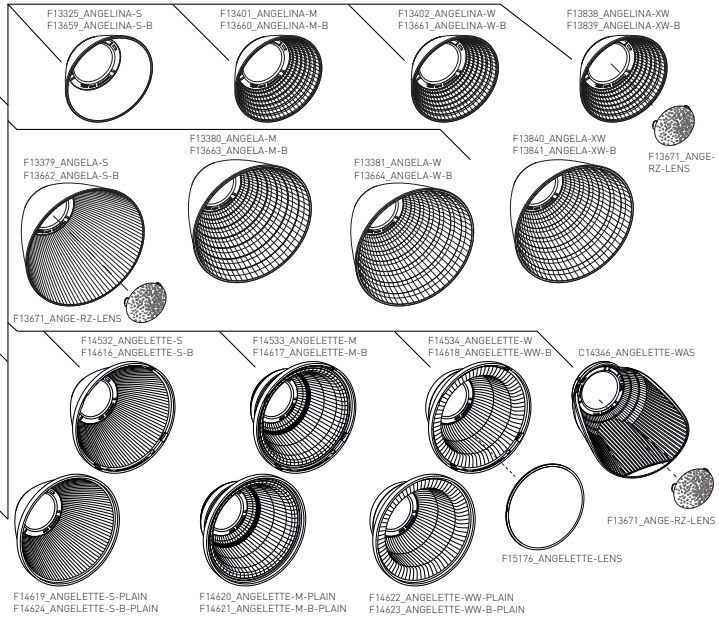
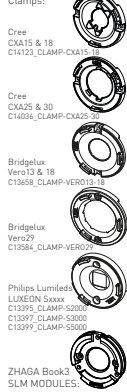
ANGELA / ANGELINA

www.ledil.com/angela-family
www.ledil.com/angelina-family

SOLDERLESS CONNECTORS:



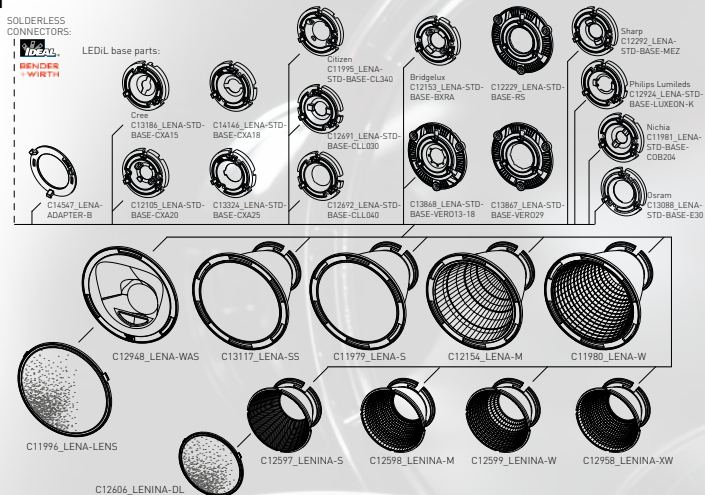
LED Clamps:



Code	Beam type	Diameter	Height	Typ. FWHM	Typ. Eff.	Typ. cd/lm
ANGELA-S	Spot	119,5	79,3	25	89	3,2
ANGELA-M	Medium	119,5	79,3	32	89	2,5
ANGELA-W	Wide	119,5	74,5	46	89	1,4
ANGELA-XW	Wide	119,5	74,5	72	93	0,6
ANGELA-XW-B	Wide	119,5	74,5	36	93	2,1
ANGELINA-S	Spot	82	31	39	90	1,2
ANGELINA-M	Medium	82	31	32	92	1,6
ANGELINA-W	Wide	82	31	47	92	1,1
ANGELINA-RZ-S	Spot	82	31	31	88	1,4
ANGELINA-RZ-M	Medium	82	31	43	89	1,1
ANGELINA-RZ-W	Wide	82	31	54	89	1,0
ANGELINA-XW	Wide	82	31	91	93	0,46
ANGELINA-XW-B	Wide	82	31	91	94	0,53
ANGELINA-M-B	Medium	82	31	39	91	1,3
ANGELINA-W-B	Wide	82	31	51	91	1,0

The information contained herein is the property of LEDIL Oy, Satorankatu 10, FI-24240 SALO, Finland, and is subject to change without prior notice. Please visit www.ledil.com for additional information, such as the latest photometric files, 3D mechanical models, and application notes relating to handling, gluing and taping.

One system,
endless possibilities



LENA

www.ledil.com/lenafamily

Code	Beam type	Diameter	Height	Typ. FWHM	Typ. Eff.	Typ. cd/lm
LENA-M	M	111	86	22	83	2,5
LENA-M-DL	M	111	87	22	77	3,4
LENA-S	S	111	86	11	85	7,6
LENA-S-DL	S	111	87	14	80	5,6
LENA-SS	SS	111	86	18	82	5
LENA-SS-DL	SS	111	87	16	74	5
LENA-W	W	111	86	46	82	1,3
LENA-WAS	WAS	111	37	Asym	82	1,1
LENA-WAS-DL	WAS	111	41,2	Asym	76	0,86
LENA-W-DL	W	111	87	45	75	1,3
LENA-X-WAS	WAS	111	37	Asym	87	0,5
LENA-X-WAS-DL	WAS	111	42	Asym	80	0,52
LENA-ADAPTER-B	Adapter ring for BJB interface					

LENINA

www.ledil.com/leninafamily

Code	Beam type	Diameter	Height	Typ. FWHM	Typ. Eff.	Typ. cd/lm
LENINA-M	M	74	46	31	87	2,1
LENINA-M-DL	M	74	48	35	80	1,6
LENINA-S	S	74	46	19	88	4,5
LENINA-S-DL	S	74	48	23	81	3,1
LENINA-W	W	74	46	53	87	1,1
LENINA-W-DL	W	74	48	54	80	1
LENINA-XW	XW	74	46	73	89	0,6
LENINA-XW-DL	WWW	74	48	68	82	0,6
LENA-ADAPTER-B	Adapter ring for BJB interface					

FWHM angles, efficiencies and cd/lm values contained herein are typical values. Actual measured values depend of the specific LED/ optic combination. Go to www.ledil.com for LED specific values and optical datasheets.

RGB-MIXING

www.ledil.com/rgb

- LEDiL patented color-mixing technology and micro-lens structure

Typical applications:

- RGBX for stage lighting and architectural applications
- Adaptive color temperature
- Perfect CRI



ANGELINA-RZ-S

PC / PC
H: 31 mm
D: 82 mm
Beam type: Spot
FWHM: 26°



ANGELA-RZ-W

PC / PC
H: 74.5 mm
D: 119.5 mm
Beam type: Wide
FWHM: 31°



GERI-RZ

PMMA/PC
H: 32,8 mm
D: 45 x 45 mm
Beam type: Wide
FWHM: 31°



RITA-A-RZ

Hyper Reflective PC
H: ≈19 mm
D: 35,1 x 28,9 mm
Beam type: Asymm.



RITA-WAS-RZ

Hyper Reflective PC
H: ≈17 mm
D: 31,9 x 28,4 mm
Beam type: Asymm.



REBECCA

PMMA / PC
H: 29,9 mm
D: 42 mm



MIRELLA-RZL

PC / PC
D: 49,9 mm
H: 25,8 mm
Beam types: -S, -M, -W, -XW

Code	Typ. FWHM	Typ. eff.	Typ. cd/lm
RGBX-M	30	70	TBA
RGBX-0	48+25	70	TBA
RGBX-SS	20	85	3,8
RGBX2-M	34	68	1,5
RGBX2-0	48+24	66	1,5
RGBX2-S	20	77	4,6
ANGELA-RZ-S	10	90	11,0
ANGELA-RZ-M	18	84	3,0
ANGELA-RZ-W	38	83	1,4
ANGELA-RZ-XW	72	89	0,6
ANGELINA-RZ-S	25	89	1,8
ANGELINA-RZ-M	37	89	1,3
ANGELINA-RZ-W	54	89	1,0
ANGELINA-RZ-XW	88	91	0,5
REBECCA-RZ-WW	38	69	0,98
BARBARA-S-PF-RZ	13	86	7,4
BARBARA-W-PF-RZ	30	85	2,2
BARBARA-WW-PF-RZ	67	85	1,2
BARBARA-XW-PF-RZ	73	85	0,3

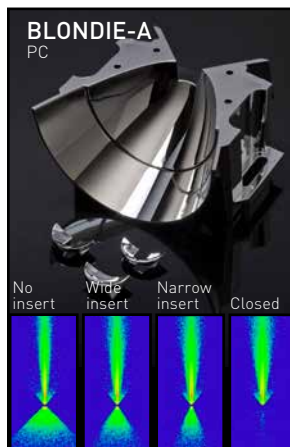
BLONDIE

www.ledil.com/blondie

Blade type wall grazing luminaires are good choices for emphasizing details and adding structure to buildings. LEDiL created the BLONDIE reflector which produces a very tight blade type wall washing beam with a single LED source using only a few watts of energy.

To shape the double-sided beam of BLONDIE further, it comes with three interchangeable inserts. With these additional reflector pieces, the backside light can easily be shaped into different angles.

Name	Beam type	H	D	Typ. FWHM	Typ. Eff.	Typ. cd/lm
BLONDIE-A						



HELENA

www.ledil.com/helena

Diamond turning is the method of choice when producing some of the very highest class optics in the world. We have used it to make HELENA, fresnel type lens having surface accuracy of a hundredth of a millimetre. This means better light control and efficiency – lighting the LEDiL way.

Name	Beam type	H	D	Typ. FWHM	Typ. Eff.	Typ. cd/lm
HELENA-A	Medium	11	72,8			
HELENA-B	Medium	11	72,8			



DOROTHY

www.ledil.com/dorothy

DOROTHY is an array of 4 side-emitting optics. It is designed for wide area lighting applications, especially anti-panic area lights.

Name	Beam type	H	D	Typ. FWHM	Typ. Eff.	Typ. cd/lm
DOROTHY-4-A	Wide area	4.5	50.6	152	94	0,3
DOROTHY-4-B	Side-Emitting	4.5	50.6	157	94	0,3



EMERALD

www.ledil.com/emerald

Cost effective one-LED, one-optic solution for exit route lighting. With EMERALD's extremely wide beam distribution it's possible to achieve EN 1838 compliant lighting for installation height to distance ratios up to and beyond 1:7. Extended illumination range and single LED design reduces costs of the fixture and installation significantly.

Name	Beam type	H	D	Typ. FWHM	Typ. Eff.	Typ. cd/lm
EMERALD-A	Rectangular	7,3	21,6	150x20	89	1,9
EMERALD-MAXI-A	Wide area lighting	12,2	33x25	Asymm.	92	2,0



RONDA

www.ledil.com/ronda

RONDA is part of LEDiL's platform of modular light engines with very wide customization possibilities. Supporting different base sockets and numerous front panel fastening methods it can be adapted to a wide range of applications with a personal touch. Whether being used in museums, offices or for architectural purposes the same modular solution allows usage with different beam patterns as well.

NEW!



RONDA-WAS
PMMA/PC

Name	Beam type	H	D	Typ. FWHM	Typ. Eff.	Typ. cd/lm
RONDA-WAS	Asymm.	25,4	49,9	Asymm.	86	TBA
RONDA-WW	Wide	16,9	49,9	62	89	TBA
RONDA-WWW	Extra wide	34,3	49,9	90	87	TBA
RONDA-ZT45	Double asymmetric	34,3	49,9	TBA	TBA	TBA

CARMEN

www.ledil.com/carmen

CARMEN is a completely renewed reflector design from LEDiL. Built from a transparent lens material instead of metallized coating, it can take advantage of all the light emitted by the light source. Hybrid reflector design also works as a cover to protect the LED both physically and visually. These functions together with LEDiL's patented RZ-technology provide a smooth light pattern without any color-over-angle problems. Assembly comes with a black holder and is part of LEDiL's Dark Light portfolio allowing low UGR values.

NEW!



CARMEN
PMMA/PC

Name	Beam type	H	D	Typ. FWHM	Typ. Eff.	Typ. cd/lm
CARMEN-W	Wide	25,9	66,4	TBA	TBA	TBA
CARMEN-W-B	Wide	36,3	69,9	TBA	TBA	TBA

OLIVIA

www.ledil.com/olivia

- Really flat lens achieved with unique folded TIR design
- Zhaga Book 3 compliant lens design
- Efficient dual-element design with low point glare
- Countersunk assembly possible

Name	Beam type	H	D	Typ. FWHM	Typ. Eff.	Typ. cd/lm
OLIVIA-S	Spot	22,6	70	20	77	3,3
OLIVIA-M	Medium	22,6	70	59	77	0,9



OLIVIA-S
PC

FRIDA-A

www.ledil.com/frida

FRIDA-A FOR REFRIGERATOR LIGHTING

- Luminaire row installation along the centerline of the cabinet
- Emits light sideways giving optimal shelf illumination



FRIDA-A

PMMA
H: 9,8 mm
D: 12,2 x 7,9 mm
Beam type: Wide area lighting

VENLA-IRIS

www.ledil.com/venla

VENLA-S-IRIS complements LEDiL's VENLA optics family by featuring one of the tightest spot beams available for Lumileds' Luxeon S.



VENLA-S-IRIS

PMMA/PC
H: 27,2 mm
D: 45 mm
Beam type: Spot

SOPHIE

www.ledil.com/sophie

SOPHIE linear optic is an excellent choice for backlighting and shelf lighting applications. It's asymmetric beam provides uniform illumination when installed inside the shelf - making your goods look great.



SOPHIE

PMMA
H: 10,4 mm
D: 150 mm
Beam type: Asymmetric

LOTTA-A

www.ledil.com/products

LOTTA is designed especially for a wide-area and backlighting applications. This lens shares the mechanical design of LEDiL's classic single STRADA family. LOTTA is design to provide good uniformity over wide areas optimized for Lumileds' Luxeon LEDs.



LOTTA-A

PMMA
H: 3,6 mm
D: 19,6 x 15,4 mm
Beam type: Wide area lighting

OONA-A

www.ledil.com/products



OONA-A

PMMA
H: 4,5 mm
D: 9,9 x 9,9 mm
Beam type: Oval

EMMA

www.ledil.com/products



EMMA-A

PMMA
H: 5,7 mm
D: 9,9 x 9,9 mm
Beam type: Side emitter

STRADA-S

www.ledil.com/products



STRADA-S-14

Name	Beam type	H	D	Typ. FWHM	Typ. Eff.	Typ. cd/lm
STRADA-S	Side emitter	6,9	19,6x15,5	144+170	93	0.36
STRADA-S-14	Side emitter	6,5	19,6x13,8	142+170	94	0.36

FWHM angles, efficiencies and cd/lm values contained herein are typical values. Actual measured values depend of the specific LED/ optic combination. Go to www.ledil.com for LED specific values and optical datasheets.

JENNY

www.ledil.com/jennyfamily

Cost effective silicone lens family designed for high power multi-crystal and COB LEDs. Comes either as a single lens or in a 8 lens array with possibility to separate lenses individually. Can be installed with glue or optional holder.



Code	Height	Dimensions	Typ. eff.	Typ. FWHM
JENNY-CY	11.5	35 x 35	94	106+106
JENNY-8X1-CY	11.5	280 x 35	94	106+106
JENNY-T4	17	35 x 35	92	Asymm.
JENNY-8X1-T4	17	280 x 35	92	Asymm.
JENNY-HLD-A-BLK	5	34.8 x 50		
JENNY-2X2-HLD	9.6	89.5 x 89.5		

ZORYA

www.ledil.com/zorya

A highly efficient silicone molded LED optic that mimics a traditional light bulb beam pattern. Lens is compatible with a large variety of LES sizes (6 to 24 mm) and high power COBs capable of luminous flux over 10.000 lumens, and yet able to achieve a substantial amount of backlight. With ZORYA there is no need for separate dome structures on top of the optics and you can easily achieve IP-ratings needed for the application.

NEW!



Code	Height	Dimensions	Typ. eff.	Typ. FWHM	
FA15073_ZORYA-SC-50	BJB 47.319.2021 compatible	35	55	97	245
FA15072_ZORYA-SC-40	BJB 47.319.6060 compatible	35	55	97	

SAGA

www.ledil.com/sagafamily

- TIR lens in optical grade silicone
- Precision-molded frame in Hyper-Reflective White PC
- Zhaga compliant fastening with two M3 screws 35 mm apart
- Average optical efficiency of 92 %
- SAGA-S under design

Name	Beam type	H	D	Typ. FWHM	Typ. Eff.	Typ. cd/lm
SAGA-HB-IP-WHT	High Bay	12	50	62	90	0.75
SAGA-S	Spot	13,7	50	29	93	TBA



SAGA-HB-IP-WHT
Silicone

STELLA

www.ledil.com/stellafamily

- Self-sealing design simplifies luminaire design
- Very good thermal and UV-resistance
- Average optical efficiency of 92%
- STELLA-T4, -DWC2 and -FRESNEL versions are compatible with IDEAL ChipLok Jr. solderless connectors



Code	Height	Diameter	Typ. eff.	Typ. FWHM
STELLA-A	22	90	92	Asymm.
STELLA-HB	19.5	90	93	76
STELLA-T4	26.9	90	92	Asymm.
STELLA-FRESNEL	23	90	89	27
STELLA-DWC2	19.27	90	92	Asymm.
STELLA-CLAMP-CXA15-18				

- STELLA-A street lighting lens featuring Type II / Type III light distribution depending on LES size
- STELLA-HB for warehouse and outdoor applications, works with COB's up to LES size 50
- STELLA-T4 street lighting lens featuring Type IV light distribution with wide variety of LES sizes
- STELLA-FRESNEL – a narrow spot fresnel lens for high power COB's with LES size approx. 22 mm or less
- STELLA-DWC2 – Type III light distribution with variety of LES sizes



NEW!

STELLA-DWC2

Silicone
H: 19.27 mm
D: 90 mm

FWHM angles, efficiencies and cd/lm values contained herein are typical values. Actual measured values depend of the specific LED/ optic combination. Go to www.ledil.com for LED specific values and optical datasheets.

High Bay

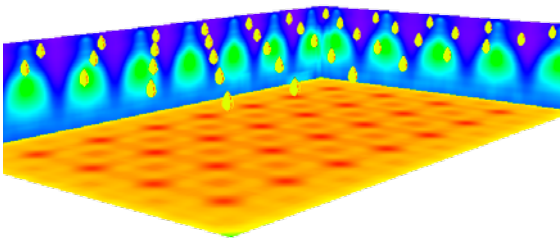
www.ledil.com/highbayfamily

Name	LEDs	Diameter	Height	Typ. FWHM
HB-SQ-A	1	25 x 25	12,9	50
STRADA-2X2-CY	4	50x50	7,8	127+127
HB-2X2-RS	4	50x50	10	10
HB-2X2-M	4	50x50	8,5	25
HB-2X2-O	4	50x50	10,6	29+117
HB-2X2-RW	4	50x50	8,5	51
HB-2X2-W	4	50x50	8,5	51
HB-2X2-WW	4	50x50	8,5	65
HB-2X2MX-M	4	90 x 90	16,38	TBA
HB-2X2MX-W	4	90 x 90	15,4	50
HB-2X2MX-WWW	4	90 x 90	16,38	TBA
HB-5X1-FLAT-W	5	123 x 25	8,5	54
HB-5X1-W	5	123 x 25	9	56
HB-5X1-WW	5	123 x 25	9	72
HB-IP-2X6-W	12	173 x 71.4	11,4	58
HB-IP-2X6-WWW	12	173 x 71.4	11,4	98
HB-IP-2X6-O	12	173 x 71.4	12,2	32+115
HB-IP-2X6-RS	12	173 x 71.4	11,4	19
HB-IP-2X6-M	12	173 x 71.4	11,4	27



HB-2X2MX-W

D: 90 x 90 mm
H: 15.4 mm
PMMA
Typ. eff: 92%
LEDs: 4



HB-2X2MX-W DESIGN EXAMPLE

Luminous flux (lamps): 24000 lm (=only six modules are needed)

Distance between luminaires: 8 m

Maintenance factor: 0.8

Room height: 10 m

Average illuminance: 301 lx

E_{\min} : 229 lx, E_{\max} : 345 lx, u_0 : 0.762

HB-IP-2X6-RS

D: 173 x 71,4 mm
H: 11,4 mm
Typ. FWHM: 19°
PMMA
LEDs: 12



HB-IP-2X6-M

D: 173 x 71,4 mm
H: 11,4 mm
Typ. FWHM: 27°
PMMA
LEDs: 12



HB-2X2MX-M

D: 90 x 90 mm
PMMA
LEDs: 4

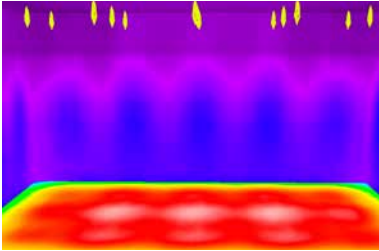


HB-2X2MX-WWW

D: 90 x 90 mm
PMMA
LEDs: 4



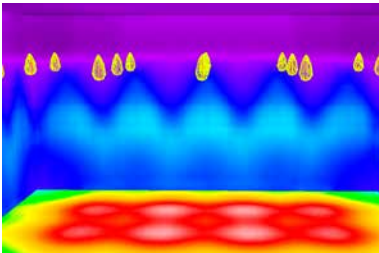
Industrial lighting with HB-2X2 modules

**C13233_HB-2X2-M**

Beam type: Medium
 Typical FWHM: 25°
 Typical efficiency: 92 %
 Typical cd/lm: 3.7

SIMULATION

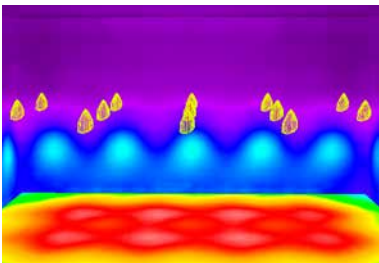
Distance between luminaires 6 m,
 10 klm / luminaire,
 average 280-300 lx,
 installation height 15 m

**C12361_HB-2X2-W**

Typical FWHM 51°
 Beam type: HighBay
 Typical efficiency: 88 %
 Typical cd/lm: 0.9

SIMULATION

Distance between luminaires 6 m,
 10 klm / luminaire,
 average 280-300 lx
 installation height 12 m

**C13232_HB-2X2-WW**

Typical FWHM: 65°
 Beam type: Wide
 Typical efficiency: 91 %
 Typical cd/lm: 0.9

SIMULATION

Distance between luminaires 6 m,
 10 klm / luminaire,
 average 280-300 lx
 installation height 9 m

**TATIANA**

www.ledil.com/tatiana

TATIANA-1X4-B

D: 102x25 mm
 H: 7,7 mm
 Typ. FWHM: 144 + 62°
 Typ. eff: 94%
 PMMA, LEDs: 4

- Designed especially to meet Russian street lighting standards.
- Module can be snapped into four single lenses which allow upgrading old lighting fixtures and gives more freedom in design.
- Designed for lighting fixtures with 15° mounting angle.
- Suitable also for wire-mounted catenary luminaires.



FWHM angles, efficiencies and cd/lm values contained herein are typical values. Actual measured values depend of the specific LED/ optic combination. Go to www.ledil.com for LED specific values and optical datasheets.

STRADELLA

NEW!

www.ledil.com/stradellafamily

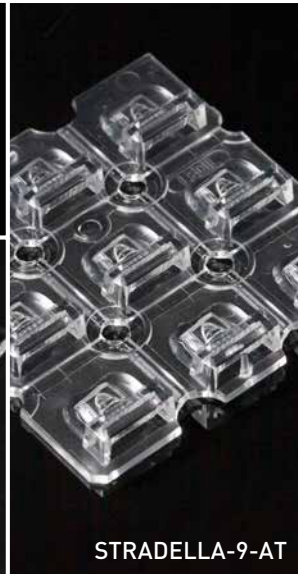
- Excellent performance and light control with low cost
- STRADELLA-9-AT is designed especially to meet Indian A-2 and B-1 lighting requirements
- T2 and T3 designed to meet the Indian BIS, 1981 street lighting requirements and also suitable for European EN1320 ME classes when used with protective glass
- Special tunneling system in STRADELLA-8 and STRADELLA-9 modules helps to achieve better thermal design of light engine
- 8- and 9-up modules feature same size as our existing 2X2



STRADELLA-8-HB

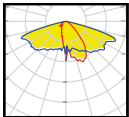


STRADELLA-8-T2



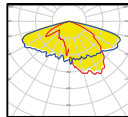
STRADELLA-9-AT

Street lighting



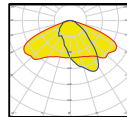
STRADELLA-8-T2

D: 49,9 x 49,9 mm
H: 5,7 mm
PMMA



STRADELLA-8-T3

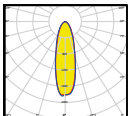
D: 49,9 x 49,9 mm
H: 5,7 mm
PMMA



STRADELLA-9-AT

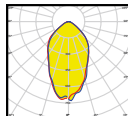
D: 49,9 x 49,9 mm
H: 6,3 mm
PMMA

High bay lighting



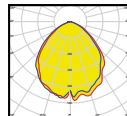
STRADELLA-8-HB-S

D: 49,9 x 49,9 mm
H: 7,5 mm
PMMA



STRADELLA-8-HB-M

D: 49,9 x 49,9 mm
H: 5,7 mm
PMMA



STRADELLA-8-HB-W

D: 49,9 x 49,9 mm
H: 7,12 mm
PMMA

Name	Beam type	LEDs	H	D	Typ. FWHM	Typ. Eff.	Typ. cd/lm
STRADELLA-9-AT	Asymmetric	9	6,3	49,5x49,5	Asymm	92	0.46
STRADELLA-8-T2	Asymmetric	8	5,7	49,5x49,5	Asymm	94	0.75
STRADELLA-8-T3	Asymmetric	8	5,7	49,5x49,5	Asymm	94	0.7
STRADELLA-8-HB-S	Spot	8	7,5	49,5x49,5	TBA	TBA	TBA
STRADELLA-8-HB-M	Medium	8	5,7	49,5x49,5	TBA	TBA	TBA
STRADELLA-8-HB-W	Wide	8	7,12	49,5x49,5	TBA	TBA	TBA
STRADELLA-HB-S	Spot	1	7,5	13,9x13,9	TBA	TBA	TBA
STRADELLA-HB-M	Medium	1	5,7	13,9x13,9	TBA	TBA	TBA
STRADELLA-HB-W	Wide	1	7,12	13,9x13,9	TBA	TBA	TBA

The information contained herein is the property of LEDIL Oy, Salorankatu 10, FI-24240 SALO, Finland, and is subject to change without prior notice. Please visit www.ledil.com for additional information, such as the latest photometric files, 3D mechanical models, and application notes relating to handling, gluing and taping.

STRADA

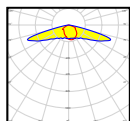
www.ledil.com/strada

STRADA lenses, originally designed for street lighting applications, are suitable for many other applications as well.

Like all LEDiL products STRADA lenses are optimized for specific LED types and have optimal light distribution and over 90% optical efficiency. Some STRADA lenses can also be used with other LED types with a small sacrifice in light distribution and optical efficiency. Asymmetric

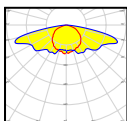
type light distributions are designated for roadway lighting with optimal performance.

Symmetric STRADA lenses were the first lenses from LEDiL designed especially for street lighting applications. On street lighting setups, symmetrical light distribution requires a mounting boom and tilt in the lamp head. This makes symmetrical STRADA lenses ideal for traditional street light replacement.



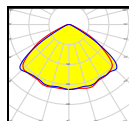
STRADA-SQ-ANZ-P

D: 25 x 25 mm
PMMA
Typ. eff.: 91%



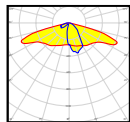
STRADA-SQ-ANZ-V

D: 25 x 25 mm
PMMA
Typ. eff.: 93%



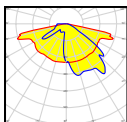
STRADA-SQ-CY

D: 25x25 mm
H: 10.1 mm
PMMA
Typ. eff: 94%



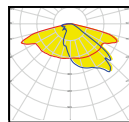
STRADA-SQ-T2

D: 25 x 25 mm
H: 8,5 mm
PMMA
Typ. eff: 90%



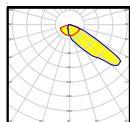
STRADA-SQ-T3

D: 25 x 25 mm
H: 8,2 mm
PMMA
Typ. eff: 90%



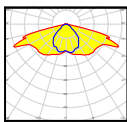
STRADA-SQ-ME

D: 25 x 25 mm
H: 8,8 mm
PMMA
Typ. eff: 92%



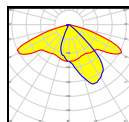
STRADA-SQ-FS

D: 25 x 25 mm
H: 12,3 mm
PMMA
Typ. eff: 93%



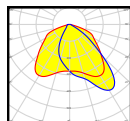
STRADA-SQ-FS2

D: 25 x 25 mm
H: 8,2 mm
PMMA
Typ. eff: 90%



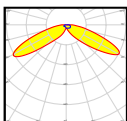
STRADA-SQ-A-T

D: 25 x 25 mm
H: 9,1 mm
PMMA
Typ. eff: 93%



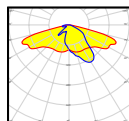
STRADA-SQ-T-DN

D: 25 x 25 mm
H: 8,5 mm
PMMA
Typ. eff: 90%



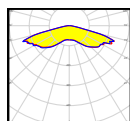
STRADA-SQ-T-DW

D: 25 x 25 mm
H: 11,4 mm
PMMA
Typ. eff: 91%



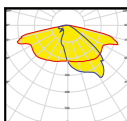
STRADA-SQ-T-DWC

D: 25 x 25 mm
H: 16,2 mm
PMMA
Typ. eff: 93%



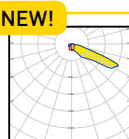
STRADA-SQ-VSM

D: 25 x 25 mm
H: 6,9 mm, PMMA
Typ. FWHM: 152°
Typ. eff: 93%



STRADA-SQ-T3B

D: 25 x 25 mm
H: 8,4mm,
PMMA
Typ. eff: 93%



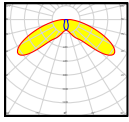
NEW!

STRADA-SQ-FS3

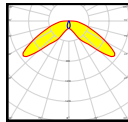
D: 25 x 25 mm
H: 16,2 mm
PMMA

FWHM angles, efficiencies and cd/lm values contained herein are typical values. Actual measured values depend of the specific LED/ optic combination. Go to www.ledil.com for LED specific values and optical datasheets.

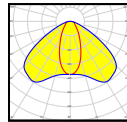
Street lighting



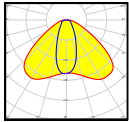
STRADA-A
D: 19,6 x 15,4 mm
H: 10,8 mm
PMMA
Typ. FWHM: 80° x 146°
Typ. eff: 92%



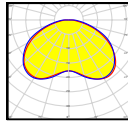
STRADA-A2
D: 19,6 x 15,4 mm
H: 10,6 mm
PMMA
Typ. FWHM: 72° x 141°
Typ. eff: 92%



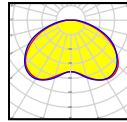
STRADA-B
D: 19,6 x 15,5 mm
H: 6 mm
PMMA
Typ. FWHM: 105° x 44°
Typ. eff: 93%



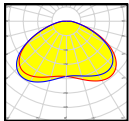
STRADA-B2
D: 19,6 x 15,5 mm
H: 5,3 mm
PMMA
Typ. FWHM: 111° x 47°
Typ. eff: 92%



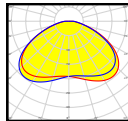
STRADA-C
D: 19,6 x 15,6 mm
H: 5,3 mm
PMMA
Typ. FWHM: 125°
Typ. eff: 92%



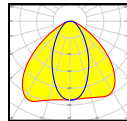
STRADA-C2
D: 19,6 x 15,6 mm
H: 6,4 mm
PMMA
Typ. FWHM: 120°
Typ. eff: 92%



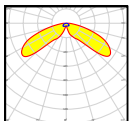
STRADA-C2-CLIP
D: 19,6 x 15,6 mm
H: 6,9 mm
PMMA
Typ. eff: 92%



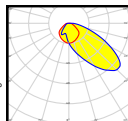
STRADA-C2-NP
D: 19,6 x 15,6 mm
H: 6,9 mm
PMMA
Typ. eff: 92%



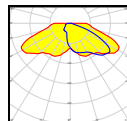
STRADA-DN
D: 19,6 x 15,7 mm
H: 5,9 mm
PMMA
Typ. FWHM: 107° x 58°
Typ. eff: 92%



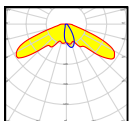
STRADA-DW
D: 19,6 x 15,7 mm
H: 9,6 mm
PMMA
Typ. FWHM: 89° x 142°
Typ. eff: 92%



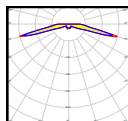
STRADA-FT
D: 19,6 x 15,4 mm
H: 8,3 mm
PMMA
Typ. eff: 91%



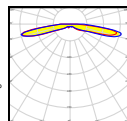
STRADA-FW
D: 19,6 x 15,5 mm
H: 10,9 mm
PMMA
Typ. eff: 92%



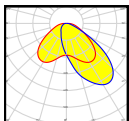
STRADA-K
D: 19,6 x 15,5 mm
H: 8,7 mm
PMMA
Typ. eff: 96%



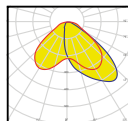
STRADA-S
D: 19,6 x 15,5 mm
H: 6,9 mm
PMMA
Typ. FWHM: 149° x 159°
Typ. eff: 93%



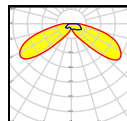
STRADA-S-14
D: 19,6 x 15,5 mm
H: 6,9 mm
PMMA
Typ. FWHM: 149° x 159°
Typ. eff: 93%



STRADA-T-DN-EP
D: 19,8 x 15,5 mm
H: 8,8 mm
PMMA
Typ. eff: 91%

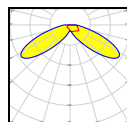


STRADA-T-DN
D: 19,8 x 15,5 mm
H: 8,9 mm
PMMA
Typ. eff: 92%



STRADA-T-DW-EP
D: 19,8 x 15,5 mm
H: 10,7 mm
PMMA
Typ. eff: 92%

Name	Dimensions	Height	Typ. eff.	Typ. FWHM
STRADA-SQ-FS-NP	25x25	12,4	93	Asymm.
STRADA-SQ-FT	25x25	12,5	90	Asymm.
STRADA-SQ-ME-NP	25x25	8,6	93	Asymm.
STRADA-SQ-T4	25x25	9,4	93	Asymm.
STRADA-SQ-FW	25x25	15,3	90	Asymm.
STRADA-SQ-T4-NP	25x25	9,4	92	Asymm.
STRADA-SQ-T-DW-90	25x25	11,4	91	Asymm.



STRADA-T-DW
D: 19,8 x 15,5 mm
H: 10,8 mm
PMMA
Typ. eff: 93%

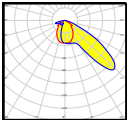
2x2 modules

www.ledil.com/strada-2x2

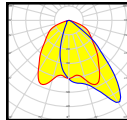
LEDiL's STRADA-2X2 modules are established industrial standard created by LEDiL. All modules feature same 50 x 50 mm footprint and positioning features making it easy for customers to modify luminaires for different applications. Being original inventor of 2X2 modules, LEDiL offers widest range of different application optimized light distributions in the market. 2X2 modules are well maintained and future-proof solution - When choosing original LEDiL 2X2 optics you can rest assured that also your luminaires will stay up-to-date regardless of future LED developments.



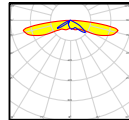
Area lighting



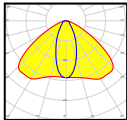
STRADA-2X2-FN
 D: 50 x 50 mm
 H: 10 mm
 PMMA
 Typ. eff.: 94%
 Forward throw,
 Narrow beam



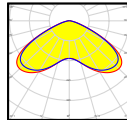
STRADA-2X2-DN
 D: 50 x 50 mm
 H: 8,05 mm
 PMMA
 Typ. eff.: 94%
 Forward throw,
 Wide beam



STRADA-2X2-XW
 D: 50 x 50 mm
 H: 7 mm
 PMMA
 Typ. eff.: 94%
 Wide beam

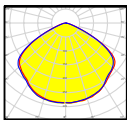


STRADA-2X2-B2-STP
 D: 50 x 50 mm
 H: 5.18 mm
 PMMA
 Typ. eff.: 93%



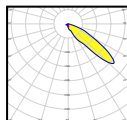
STRADA-2X2-C-STP
 D: 50 x 50 mm
 H: 6.27 mm
 PMMA
 Typ. eff.: 94%

High bay



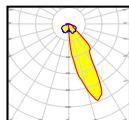
STRADA-2X2-CY
 D: 50x50 mm
 H: 7.8 mm
 PMMA
 Typ. eff.: 94%

Tunnel lighting



STRADA-2X2-TF
 D: 50 x 50 mm
 H: 8.73 mm
 PMMA
 Typ. eff.: 94%

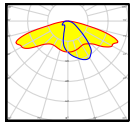
Urban lighting, Minimal backlight



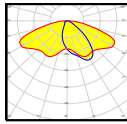
STRADA-2X2-NHS
 D: 50 x 50 mm
 H: 9.8 mm
 PMMA
 Typ. eff.: 90%

FWHM angles, efficiencies and cd/lm values contained herein are typical values. Actual measured values depend of the specific LED/optic combination. Go to www.ledil.com for LED specific values and optical datasheets.

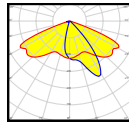
Street lighting



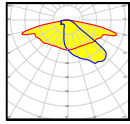
STRADA-2X2-DWC
D: 50 x 50 mm
H: 6 mm
PMMA
Typ. eff: 93%



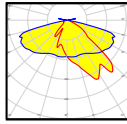
STRADA-2X2-DNW
D: 50 x 50 mm
H: 11 mm
PMMA
Typ. eff: 93%



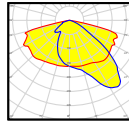
STRADA-2X2-A-T
D: 50 x 50 mm
H: 7,3 mm
PMMA
Typ. eff: 93%



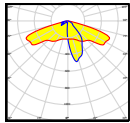
STRADA-2X2-ME
D: 50 x 50 mm
H: 8,2 mm
PMMA
Typ. eff.: 94%



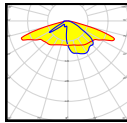
STRADA-2X2-ME-WIDE1
D: 50 x 50 mm
H: 8,3 mm
PMMA
Typ. eff.: 84%



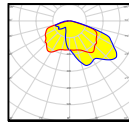
STRADA-2X2-ME-WIDE2
D: 50 x 50 mm
H: mm
PMMA
Typ. eff: 81%



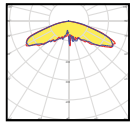
STRADA-2X2-T2
D: 50 x 50 mm
H: 7,7 mm
For IESNA Type 2 road lighting
Typ. eff.: 94%



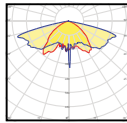
STRADA-2X2-T3
D: 50 x 50 mm
H: 7 mm
PMMA
Typ. eff.: 94%



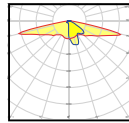
STRADA-2X2-T4
D: 50 x 50 mm
H: 7 mm
PMMA
Typ. eff.: 94%



STRADA-2X2-VSM
D: 50 x 50 mm
H: 6,14 mm
PMMA
Typ. eff: 94%
IESNA Type V Short

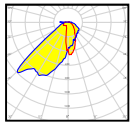


STRADA-2X2-CAT
D: 50 x 50 mm
H: 6,2 mm
PMMA
Typ. eff: 94%
For catenary luminaires

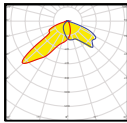


STRADA-2X2-SCL
D: 50 x 50 mm
PMMA
Typ. eff.: 94%
European S-class lighting

Pedestrian crossing lighting



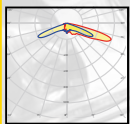
STRADA-2X2-PX
D: 50 x 50 mm
H: 8 mm
PMMA
Typ. eff.: 94%
For right side traffic



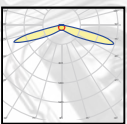
STRADA-2X2-PXL
D: 50 x 50 mm
H: 8 mm
PMMA
Typ. eff.: 94%
For left side traffic

NEW!

Street lighting



STRADA-2X2-T4-B
D: 50 x 50 mm
H: 9,02 mm
PMMA
Typ. eff.: 93%



STRADA-2X2-T1
D: 50 x 50 mm
H: 7,78 mm
PMMA
Typ. eff.: 94%
IESNA Type I light distribution



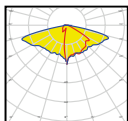
STRADA-2X2-T4-B

STRADA-2X2S

www.ledil.com/products

The original STRADA-2X2 with sturdier self-sealing silicone optics - what more can you wish for. The 2X2S-T3 is the first fruit of this new establishment and will lead you to a more care-free and long-lasting outdoor luminaires. Simple fastening with only one screw and durable outcome ready to take the heat from all directions.

NEW!



STRADA-2X2S-T3

D: 50 x 50 mm

H: 7,23 mm

Silicone

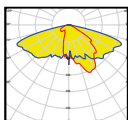
IESNA Type III Medium

light distribution

Silicone 2X2MXS

As you probably have noticed, LEDiL is constantly improving products while maintaining well-established module structures allowing wider compatibility and future-proof assemblies. Introducing the new 2X2MXS, a silicone lens that does not shy away from bad weather conditions or smaller impacts. Not to forget exceptional thermal and UV resistance.

NEW!



STRADA-2X2MXS-DWC2

D: 90 x 90 mm

H: 14,41 mm

Silicone

2X2MX modules

www.ledil.com/2x2mx

– Maximize your creativity without compromising compatibility

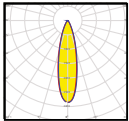
The 2X2MX platform features standardized 90x90 mm square-shaped footprint and same incomparable performance as proven in smaller HB- and STRADA-2X2 modules. 90-degree rotation of the modules with wide range of optic solutions enables mixing and modifying your same luminaire structure to be used in many different applications. With integrated silicone gasket all modules are protected from dirt and water up to IP67.

LEDIL's new 2X2MX platform is designed for the super high power LEDs from a range of manufacturers.

2X2^{mx}

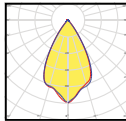


HB-2X2MX



HB-2X2MX-M

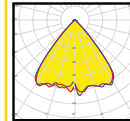
D: 90 x 90 mm
H: 16,38 mm
PMMA
Typ. FWHM: 30°
Typ. eff.: 92%



HB-2X2MX-W

D: 90 x 90 mm
H: 15,35 mm
Typ. FWHM: 50°
Typ. eff.: 92%
PMMA

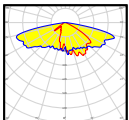
Coming soon!



HB-2X2MX- WWW

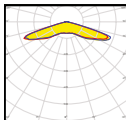
D: 90 x 90 mm
H: 16,38 mm
PMMA

STRADA-2X2MX



STRADA- 2X2MX-DWC

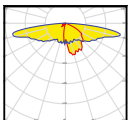
D: 90 x 90 mm
H: 11,3 mm
Typ. eff.: 94%
PMMA



STRADA- 2X2MX-V

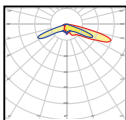
D: 90 x 90 mm
H: 13,4 mm
PMMA
Typ. eff.: 94%
Type V street lighting

Coming soon!



STRADA- 2X2MX-SCL

D: 90 x 90 mm
H: 13,17 mm
PMMA
S class lighting
applications



STRADA- 2X2MX-T4-B

D: 90 x 90 mm
PMMA

STRADA-IP 2X6 modules

www.ledil.com/strada-ip-2x6

STRADA-IP-2X6-DWC

D: 173 x 71,4 mm
H: 7,9 mm
Typ. efficiency: 93%

STRADA-IP-2X6-T2

D: 173 x 71,4 mm, H: 9,2 mm
Typ. efficiency: 94%

STRADA-IP-2X6-T3

D: 173 x 71,4 mm, H: 8,5 mm
Typ. efficiency: 94%

STRADA-IP-2X6-ME

D: 173 x 71,4 mm, H: 8,4 mm
Typ. efficiency: 94%

STRADA-IP-2X6-DWC-90

D: 173 x 71,4 mm, H: 8,98 mm
Typ. efficiency: 94%

NEW!

STRADA-IP-2X6-VSM

D: 173 x 71,4 mm, H: 9 mm
Typ. efficiency: 94%

STRADA-IP-2X6-T4-B

D: 173 x 71,4 mm, H: 10,57 mm

STRADA-IP-2X6 modules are the solution for efficient and aesthetically pleasant street lighting. Bigger lens modules allow easier installation and faster construction of luminaries.

All the modules comes with an integrated silicone gasket to allow ingress protection against dirt and dust up to IP67. Wide range of optical solutions to cover major European, Russian and IESNA lighting classes makes upgrading street light into more efficient LED lighting easier than ever.

STRADA 6X1 modules

www.ledil.com/strada-6x1

Precision-engineered lens array.

Emitted light has an asymmetric tilt in the wide beam to efficiently direct light to the roadway surface and to minimize stray light outside of target areas.



STRADA-T-6X1-DNW

D: 119,8 x 25,2 mm
H: 5,6 mm
Typ. efficiency: 93%



STRADA-T-6X1-DWC

D: 119,8 x 25,2 mm
H: 5,5 mm
Typ. efficiency: 94%

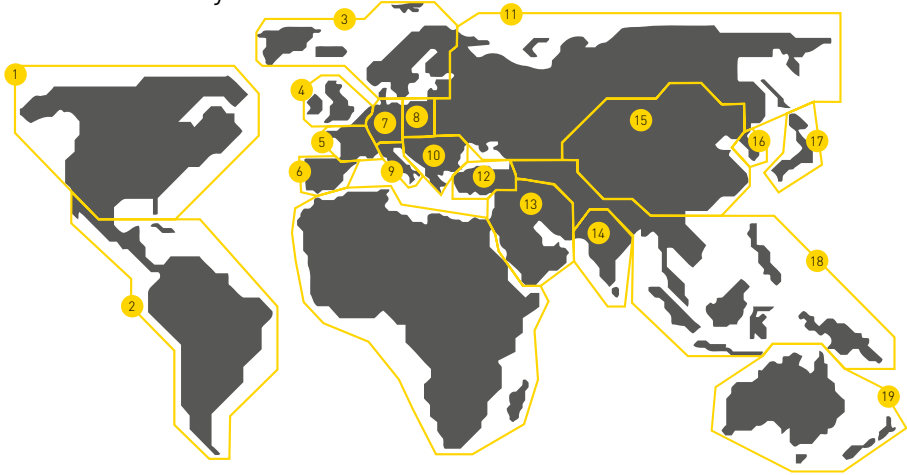


STRADA-T-6X1-ME

D: 119,8 x 25,2 mm, H: 8,2 mm
Typ. efficiency: 93%

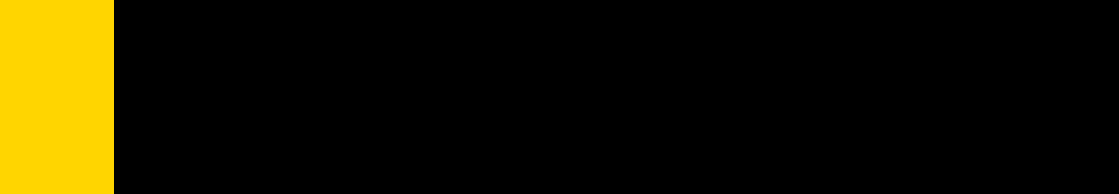
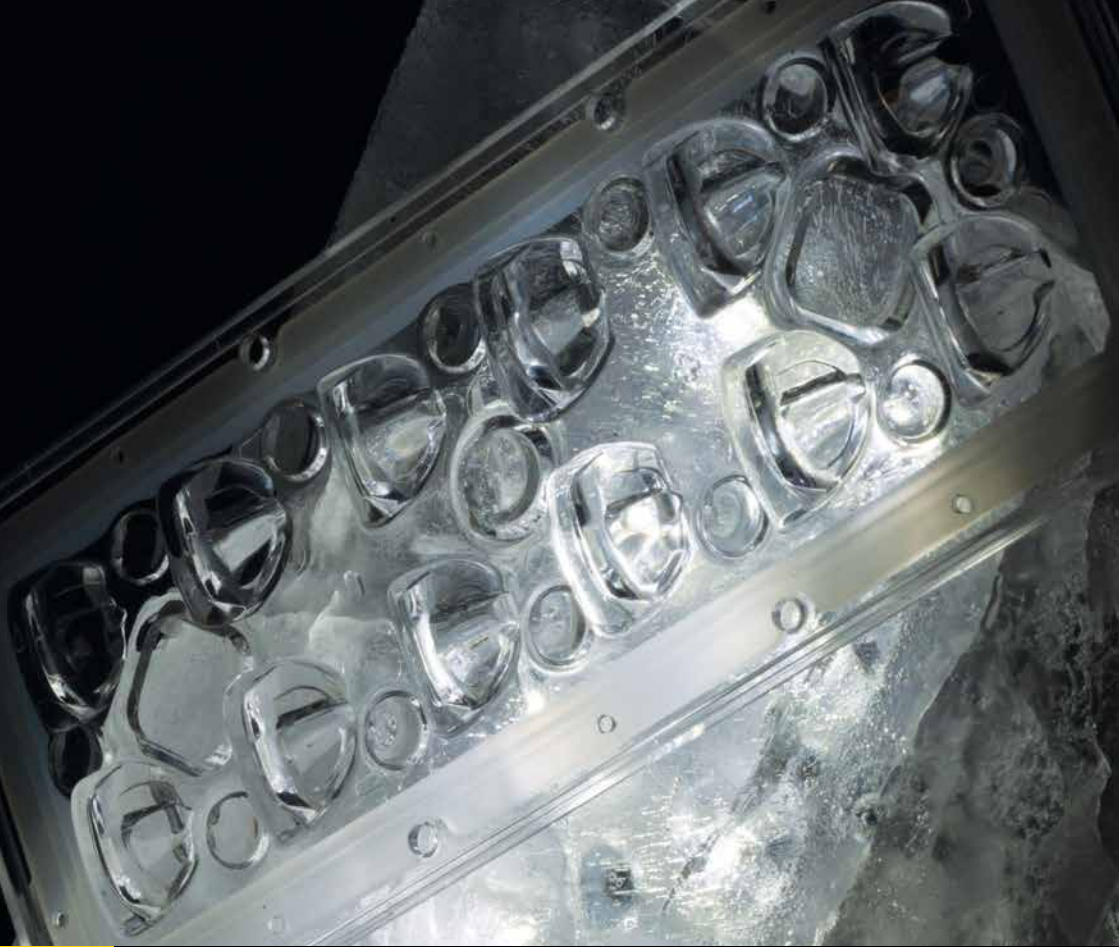
FWHM angles, efficiencies and cd/lm values contained herein are typical values. Actual measured values depend of the specific LED/optic combination. Go to www.ledil.com for LED specific values and optical datasheets.

Where to buy



1	North America	us.sales@ledil.com	+[+358] 404 139 990	Sales and Technical Support
	Andrey Vasilyev	andrey.vasilyev@ledil.com	+1 (617) 599 0115	Northeast US, Canada
	Pasi Kontto	pasi.kontto@ledil.com	+358407762149	Mid-Atlantic states
	Steve Howie	steve.howie@ledil.com	+1 (704) 309 0368	Regional Sales Manager, South-East USA
1, 10	Lauri Haarala	lauri.haarala@ledil.com	+358 40 653 7666	Midwestern US Balkans
	Bruno Musolino	bruno.musolino@ledil.com	+55 (11) 9 8264 6688	Brazil
2, 10	Jen John Lee	jen.lee@ledil.com	+55 (11) 9 7378 8874	Brazil
	Raul Parra	raul.parra@ledil.com	+358 (0) 40 095 6839	Central America, South-America Greece
3, 16, 17	Ville Saarinen	ville.saarinen@ledil.com	+358 40 732 8705	Nordic, Baltic South-Korea Japan, Taiwan
	Simon Aldred	simon.aldred@ledil.com	+44 7540 726 384	UK, Ireland, Benelux
	Glenn Bultinck	glenn.bultinck@ledil.com	+33 75 09 78 155	France
6	Dave Simpson	dave.simpson@ledil.com	+34 607 858 901	Spain, Portugal
7	Martin Lengwenus	martin.lengwenus@ledil.com	+49 1577 1916641	Germany, Austria, Switzerland
	Ewald Sutor	ewald.sutor@ledil.com	+49 173 381 7312	Germany (PLZ 6, 7, 8), Austria, Switzerland
8	Oliver Klasen	oliver.klasen@ledil.com	+49-151 20661985	Germany (PLZ 0-5, 9)
	Marcin Wiewiórka	marcin.wiewiorka@ledil.com	+48 501 765 576	Poland, Czech Republic, Slovakia
9	Diego Quadrio	diego.quadrio@ledil.com	+39 340 659 9236	Italy
10	Nonna Raita	nonna.raita@ledil.com		Eastern Europe
11	Saken Jusupov	saken.jusupov@ledil.com	+7 911 758 95 54	Russia, Ukraine, Belarus, Kazakhstan
12	Zekeriya Boz	zekeriya.boz@ledil.com	+90 546 291 2 444	Turkey & ME
13	Bahador Mozaffari	bahador.mozaffari@ledil.com	+98 912 593 9355	Iran
14	Joni Mäki	joni.maki@ledil.com	+358 404 139 990	Global
15	Tang Yunfeng	yunfeng.tang@ledil.com	+86 139 1727 3224	China, Hong Kong, Taiwan, Mongolia
18	Suppaluck Sae-Sean	suppaluck.sae-sean@ledil.com	+66 869 741 968	Thailand, Malaysia
19	Sampsa Nurmi	sampsa.nurmi@ledil.com	+358 41 5035316	Global

For detailed information visit www.ledil.com/where_to_buy



www.ledil.com