

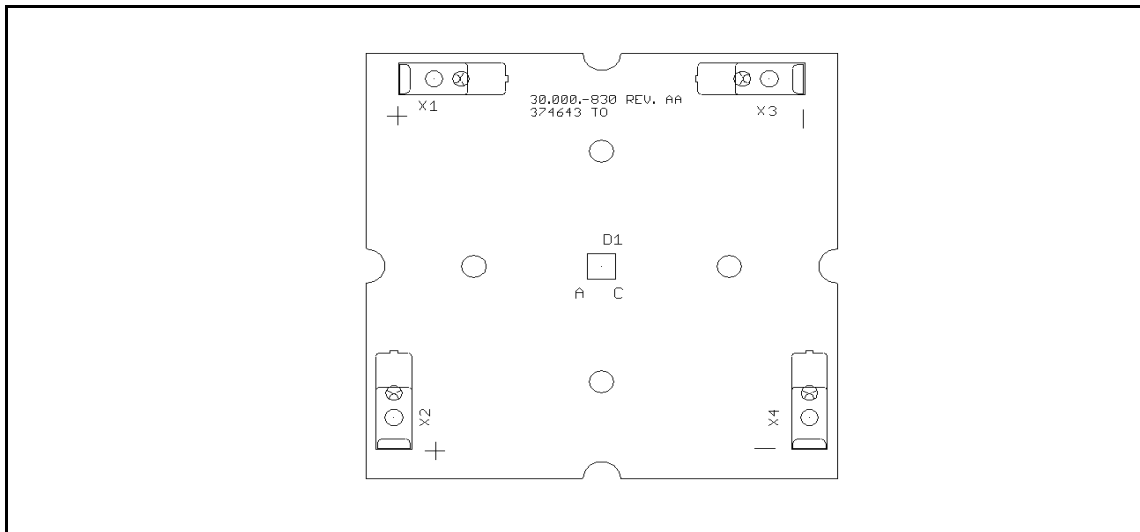
# Datasheet

preliminary



LED Module

BJB Art. No.: 30.000.0523 - 30.000.0524



dimensions: 39,7 mm x 39,7 mm 1,5 mm (IMS)

## Photometric Data

Luminous flux		260 lm	280 lm	
Color temperature		3.000K	4.000K	
Color rendering index (CRI)		> 80		
Color tolerance		< 3 SDCM		
Number of LEDs per module		1		
LED Pitch		---	---	
Beam angle		115 °		

## Temperature Data

Max. temperature at Tc point		100 °C
Operating temperature		- 30 °C up to + 45 °C
Storage temperature		- 30 °C up to + 85 °C

## Electrical Data

Operating mode	Constant Current		
Operational current If		700 mA	700 mA
Max. operational current		1.400 mA	1.400 mA
Operational voltage Uf		3,1 V	3,1 V
Power consumption		2,1 W	2,1 W
Efficiency		124 lm/W	133 lm/W
Average lifetime (@ Tc max. @ If typ.)		50.000 h	
Dimmable		yes, with suitable control gear	
Connection		parallel connection (Basic isolation for max. 60 V)	

Tolerances of optical and electrical data:  $\pm 10 \%$

Optical and electrical data @ Tc = 50 °C

Warranty conditions of BJB GmbH & Co KG as stated on page 100 of the LED Applications catalogue (Issue No. 1 - 2014) and as available via the Internet under [www.bjb.com/warranty-conditions.html](http://www.bjb.com/warranty-conditions.html) are valid. The Layout is designed to the required standards in case of the isolation, clearance and creepage distance. The electrical and optical values are calculated theoretical.

Advice on technical applications is provided to the best of our knowledge, but does not free the user from the necessity to examine this advice with regard to its suitability for the intended purpose. The customer is responsible for determining the suitability and appropriate use of this product. BJB accepts no liability with regard to advice on technical applications.