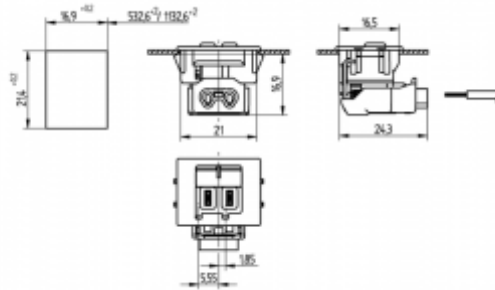


BJB///OEM-Line

28.701.1002

Linear Flat System



Emb. Referencia
100 28.701.1002.51

Socket: GR6d-3

Lampholder for Linear Flat
Spring connection "Click-Fit"
Also suitable for automatic wiring
Fijación rápida

PC

- Also suitable for automatic wiring
- Spring connection "Click-Fit"
- VDE-REG.-No. E612

T 80	2 A 250 V			
			0,5 - 0,75 mm ²	0,4 - 1,0 mm