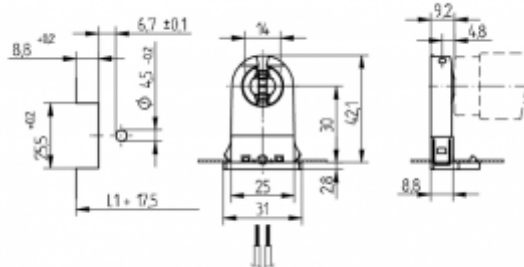


Linear Fluorescents: General Applications

26.293.6211

G13 (Medium Bi-Pin): Push-Through Lampholders



L1+17.5: Recommended cutout spacing . "L1" distance is determined by the length of the respective lamp.

color	pkg.	wt.	part no.
white	500	6 g	26.293.6211.51

Approval: cULus

Lamp center: 30 mm
Push through mount

Housing: PC
Rotor: PBT

- For cut-outs open at the rear or enclosed cut-outs with 4.5 mm dia. locating hole
- A pair of lampholders provides a lamp length tolerance compensation of 3 mm
- Instantstart version for USA and Canada: with integrated short circuiting bridge

120°C 115°C								660 W 600 V
				18 AWG	0.4 - 2.0			