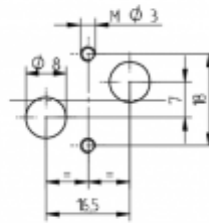
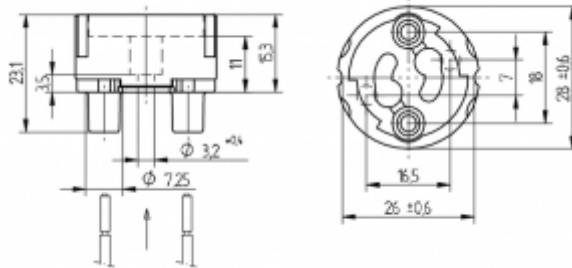


# HID Lampholders

GX10

25.835.1000



pkg. wt. part no.  
500 10 g 25.835.1000.00

Connection: without cable, single pushwire terminals

Approval: cURus

Screw mount

Housing: Ceramic / PPS

- For 2 ignition cables
- Suitable for light fittings of protection class II in accordance with EN 60598-1 2008.
- Height of screw head max. 1.5 mm (e.g. countersunk screw)
- The correct function is obtained by screw mount.

T250			2 A 250 V	 5 kV/pulse
		max. 1.8 mm		